

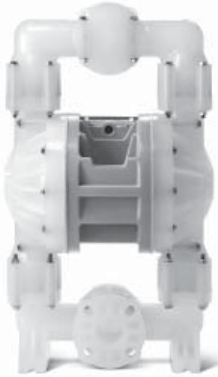
Ultra-Matic® 2" Bolted Plastic Pumps

with Optional Center Porting

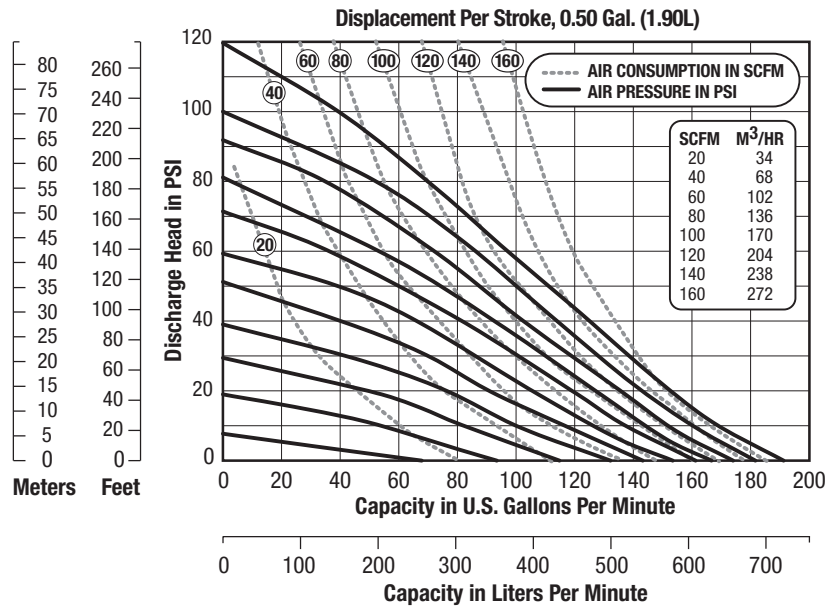
U2

Specifications

	English	Metric
Flow rate		
adjustable to	0-192 gpm	0-727 lpm
Port size		
Inlet and Outlet	2" ANSI/DIN #50 Flange	
Air inlet	0.50" NPTF	
Air exhaust	0.75" NPTF	
Suction lift* (dry)		
Rubber	20'	6.10 m
PTFE	10'	3.05 m
Max. particle size		
Diameter	0.25"	6 mm
Shipping weight		
Poly, Center Port	72 lbs	33 kg
PVDF, Center Port	98 lbs	44 kg



Performance



NOTE: For U2 pumps fitted with PTFE diaphragms, reduce water discharge figures by 20%. Suction lift is reduced to 10' (3.05m) dry and 20' (6.10m) wet.

CAUTION: Do not exceed 125 psig (8.5 bars) air supply or liquid pressure.

Dimensions

