

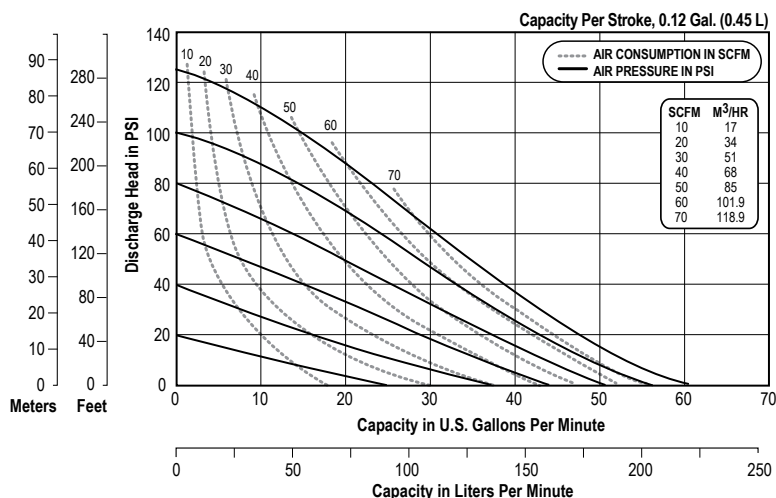
V4 DATA SHEET

SPECIFICATIONS & PERFORMANCE

4" V Series

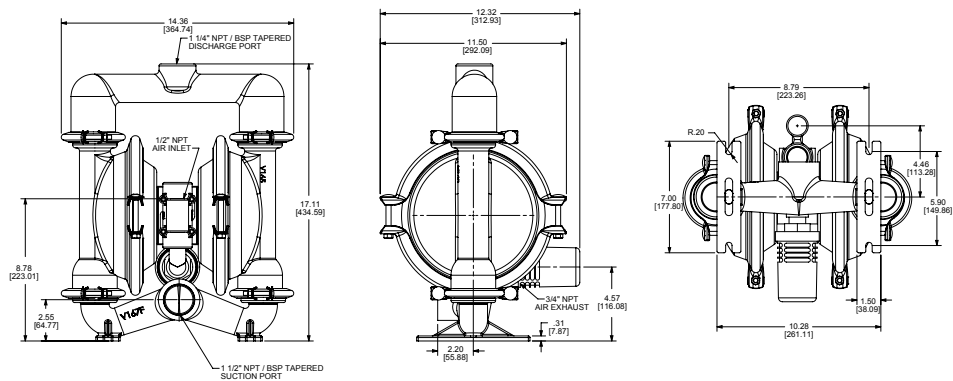
Clamped Metallic
with Metallic Center Sections

PERFORMANCE



NOTE: Performance based on the following: elastomeric fitted pump, flooded suction, water at ambient conditions. The use of other materials and varying hydraulic conditions may result in deviations in excess of 5%.

DIMENSIONS



SPECIFICATIONS

Flow Rate

Adjustable to . . . 0-61 gpm (230.9 lpm)

Port Size

Suction 1 1/4" NPT

Discharge 1 1/4" NPT

Air Inlet 3/8" NPT

Air Exhaust 3/4" NPT

Suction Lift

Dry 20' (6.09 m)

Wet 25' (7.62 m)

Max Solid Size (Diameter)

. 3/16" (4.76 mm)

Max Noise Level 100 dB(A)

Shipping Weights

Aluminum 41 lbs (18.6 kg)

Cast Iron 57 lbs (25.9 kg)

Stainless Steel 57 lbs (25.9 kg)



VERSAMATIC®

Warren Rupp, Inc. | A Unit of IDEX Corporation
800 North Main Street | Mansfield, OH 44902 USA
Phone: 419.526.7296 | Fax: 419.526.7289

VERSAMATIC.COM

V4_DS-rev0519

©Copyright 2019 Warren Rupp, Inc. All Rights Reserved.