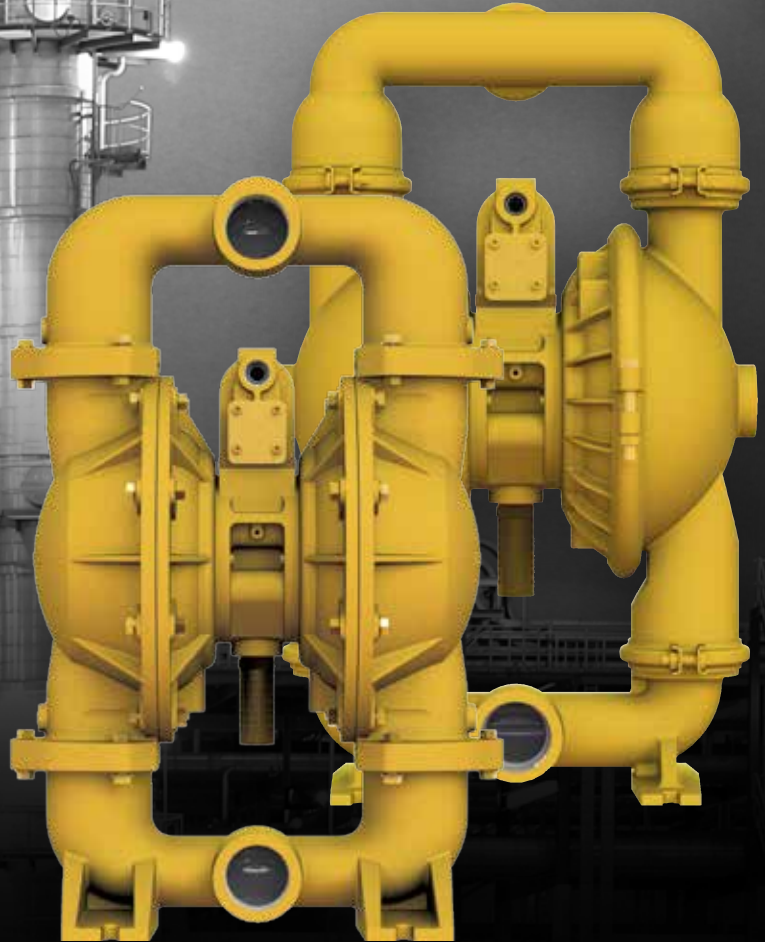


REFINERY

APPLICATIONS

VERSA-MATIC[®]
VERSAMATIC.COM



IBEX

THE VERSA-MATIC ADVANTAGE

THE BROADEST RANGE OF PUMP TYPES AND STYLES TO MEET THE WIDEST VARIETY OF APPLICATIONS

THE RIGHT PUMP FOR ANY JOB

Since 1983, Versa-Matic has redefined the standard of performance in air operated double diaphragm (AODD) pumps. Simple, proven, robust designs offer unsurpassed reliability and worry free performance.

WIDEST RANGE OF PUMPING TECHNOLOGIES:

Diaphragm pumps

- Ball Valve – Clamped and Bolted (handles fluids and slurries)
- Flap Valve – Handles slurries and liquids with larger solids up to 1 1/8"
- Centrifugal – SludgeMaster (dewatering pump for high volumes up to 300 gpm)
Porta-Matic (12-volt battery powered for localized dewatering)

PROVEN RELIABILITY

The patented Elima-Matic air valve system has been proven to perform in even the most difficult of applications. The valve has been designed to handle wet and dirty air effectively without stalling.

EASE OF MAINTENANCE

- Air valve is easily accessible without taking the pump off line
- Simple to install, diaphragm designs reduce maintenance time (Versa-Dome, FUSION)
- Lube-free operation

INTERCHANGEABILITY

Complete Elima-Matic pumps and air sections available to replace or upgrade most Wilden® 4,8, and 15 Series models.

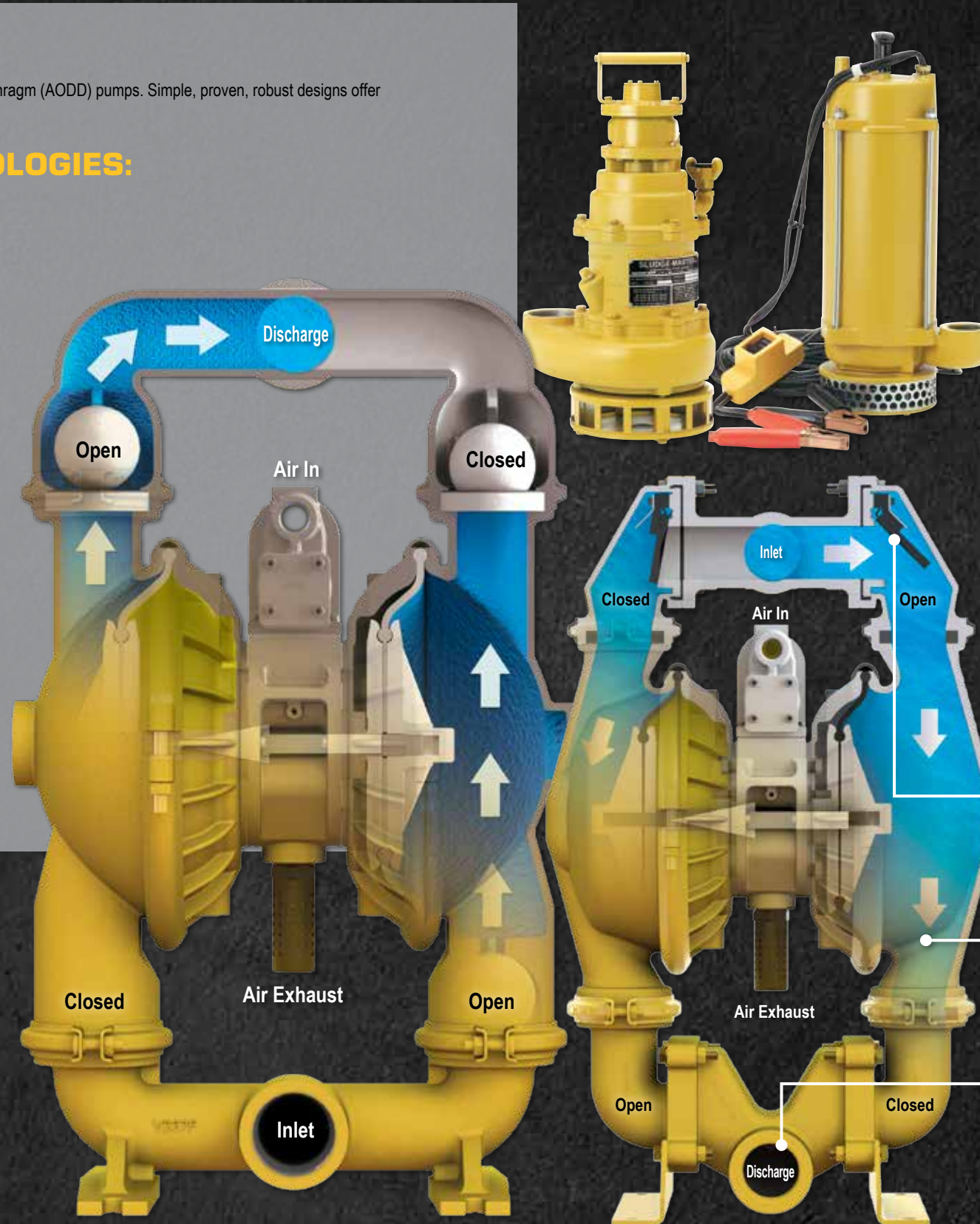
EXCELLENT MTBF:

- Extended life diaphragm styles ensure long in-service life
- Engineered dynamic spool and shaft seals provide excellent wear characteristics
- Simple, low cost rebuild options. Complete assemblies, kits, or individual components

BALL VALVE PUMPING TECHNOLOGY

Ball valve pumps in both clamped and bolted configurations:

- Reliably handles everything from slurries and solids laden fluids to water. The gentle pumping action and open clearances provided by AODD pumps are also perfect for shear sensitive products that can be damaged by other pump types.
- Can deliver flow rates up to 273 gpm (1,033 lpm)
- The clamped design provides ease of repair
- Bolted design provides leak-free safe transfer of thin fluids
- Dimensionally interchangeable models to replace Wilden® 4,8, and 15 Series models also available



CENTRIFUGAL PUMPING TECHNOLOGY

Dewatering Pumps

SludgeMaster (Pneumatic)

- Flows to 300 gpm (1,140 lpm)
- Fully submersible
- Weighs only 59 lbs.
- Can run dry without damage
- Handles solids up to 1.5"
- Fits in openings as small as 14" diameter
- Self-priming and continuous automatic lubrication

Porta-Matic (12-volt)

- Flows to 43 gpm (163 lpm)
- Runs off any 12-volt truck/auto battery
- Fully submersible
- Fits in openings as small as 10" diameter
- Weighs only 33 lbs.
- 30-foot cord
- Whisper-quiet
- Self-lubricating shaft seal, bearing lubricated for life

FLAP VALVE PUMPING TECHNOLOGY

Flap Check Valve

Hinge pads exert positive pressure on the flaps allowing the pump to operate in virtually any position. This helps deliver superior suction lift and flow rates up to 219 gpm (829 lpm).

Superior Solids Handling

The flap valve design allows for greater solids handling up to 1 1/8" (28.58 mm) due to the open internal pump tolerances and its top suction bottom discharge gravity assistance flow through design.

Bottom Discharge

The bottom discharge, top suction design is optimum for handling settling solids and slurry.gravity assistance flow through design.



APPLICATIONS & INDUSTRIES

VERSA-MATIC PROVIDES PUMPS THAT MOVE YOUR INDUSTRY. INSTALLED IN COUNTLESS APPLICATIONS AND INDUSTRIES THROUGHOUT THE WORLD.

GENERAL INDUSTRY

- Portable utility pump
- Waste treatment/filter press feed
- Sump/pit transfer

MINING

- Dewatering
- Fuel transfer

PAINTS & COATINGS

- Tanker car unloading
- Blending
- Packaging line feed

FOOD PROCESSING

- Tank circulation / Transfer (Wine)
- Packaging line feed
- Waste treatment

CHEMICAL

- Product transfer
- Blending
- Packaging line feed
- Containment field remediation

MARINE

- Barge cleaning
- Tank transfer

OIL & GAS

- Drilling chemical transfer
- Mud makeup
- Containment field remediation

ONLY A SAMPLING OF INDUSTRIES SERVED

WHY CHOOSE AODD PUMPS:

AODD PUMPS DELIVER UNIQUE BENEFITS THAT ARE UNRIVALED BY OTHER PUMP TECHNOLOGIES, MAKING THEM THE CLEAR CHOICE FOR MANY OF THE WORLD'S MOST CHALLENGING APPLICATIONS.

1. **Run-dry** without damaging the pump or system
2. **Pump solid** laden fluids without pump or product damage
3. **Self-priming**, works in suction lift applications
4. **Deadheads safely**, with no pump or product damage
5. **Shear sensitive**, does not shear or separate product being pumped
6. **No electricity required**, and can be fully grounded
7. **Low initial purchase price** compared to other technologies
8. **Submersible**, completely submersible with no safety/performance issues
9. **Sealless design**, no expensive mechanical seals or packing are required
10. **Variable flow & head pressures**, without sophisticated controls

PUMP TYPE:	AODD vs. Others						
	AODD	CENTRIFUGAL	LOBE	GEAR	PROGRESSIVE (SCREW)	PERISTALTIC (HOSE)	PISTON/PLUNGER
Technology:	Non PD Reciprocating	Kinetic	PD Rotary	PD Rotary	PD Rotary	PD Rotary	PD Reciprocating
Variable Flow & Head Control (inherently adjustable)	✓	!	!	!	!	!	!
Deadheads Safely (at zero energy consumption)	✓	!	!	!	!	!	!
Dry-Running	✓	✗	✗	✗	✗	✗	✗
Dry-Priming (lift installations)	✓	✗	✗	✗	✗	✗	!
No Installation Alignment Required	✓	✗	✗	✗	✗	✗	✗
No Electrical Installation Required	✓	✗	✗	✗	✗	✗	✗
Portability	✓	!	!	!	!	!	!
Submersible	✓	!	✗	✗	✗	✗	✗
Sealless (no packing or mechanical seals)	✓	!	!	!	!	!	!
No Slip (thin liquids)	✓	!	!	!	!	!	!
Cavitation Tolerance (low NPSHa)	✓	✗	!	!	!	!	!
Low Shear & Degradation	✓	✗	!	!	!	!	!

✓ = Best Fit ! = Limitations ✗ = Not Recommended

INSTALLATION VERSATILITY

Multiple Installation Configurations

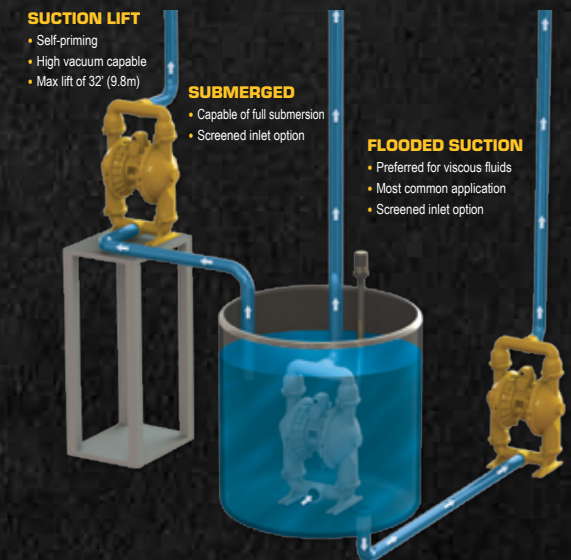
Versa-Matic installation and application flexibility is unrivaled compared to other types of positive displacement (PD) pumps.

Our pumps are designed to perform in less than optimum system conditions. Versa-Matic pumps can be fixed mounted to your process system or remain portable for easy mobility. Simplifying your systems begins with Versa-Matic.

All installations:

- Run-dry capable
- No heat generation
- No electricity required

NOTE: Consult your distributor or service manual for proper materials of construction and installation for your application.



PUMPS COMMONLY USED FOR RENTAL APPLICATIONS

BROADEST RANGE OF PUMP TYPES AND OPTIONS TO MEET YOUR TOUGHEST FLUID HANDLING REQUIREMENTS



		AODD BALL VALVE					AODD BALL VALVE			AODD FLAP VALVE	CENTRIFUGAL		
PUMP MODEL		E2 Clamped	E2 Screen Base Clamped	E2 Bolted	E2 Bolted	E2 Bolted	E3 Clamped	E3 Screen Base Clamped	E3 Bolted	E3 Bolted	E2 Flap Valve Clamped	SMA3-A	SPA15
SPECIFICATIONS	Wetted Material Options	AL / CI / SS / H	AL	AL	CI / SS / H	PP / K	AL / CI / SS / H	AL	AL / SS / H	PP / K	AL	AL	AL
	Air Side Material Options	AL / SS / Coated AL*	AL / SS / Coated AL*	AL	AL / SS / Coated AL*	AL / SS / Coated AL* / PP**	AL / SS / Coated AL*	AL	AL / SS / Coated AL*	Coated AL*	AL	N/A	N/A
	Construction Type (Clamped / Bolted)	Clamped	Clamped	Bolted	Bolted	Bolted	Clamped	Clamped	Bolted	Bolted	Clamped	N/A	N/A
	Fluid Suction / Discharge Port Size / Connection Type	2" (50.8 mm) Threaded (NPT / BSP)	2" (50.8 mm) Threaded (NPT / BSP)	2" (50.8 mm) Threaded (NPT / BSP)	2" (50.8 mm) Flanged (ANSI / DIN) Optional: (NPT / BSP)	2" (50.8 mm) Flanged (ANSI / DIN)	3" (76.2 mm) Threaded (NPT / BSP)	3" (76.2 mm) Threaded (NPT / BSP)	3" (76.2 mm) Flanged (ANSI / DIN) Optional: (NPT / BSP)	3" (76.2 mm) Flanged (ANSI / DIN)	2" (76.2 mm) Threaded (NPT / BSP)	3" (76.2 mm) Threaded (NPT / BSP)	1 1/2" (38 mm) Threaded (NPT / BSP)
	Porting Configurations	Horizontal / Center	Horizontal / Center	Horizontal / Center	Vertical / Horizontal / Center	End / Horizontal / Center / Vertical	Horizontal / Center	Horizontal / Center	Horizontal / Vertical (AL) Center	Horizontal / Vertical / Center	Horizontal / Vertical / Center	N/A	N/A
	Max Flow Rate Per Minute	185 gpm (268 lpm)	185 gpm (268 lpm)	163 gpm (617 lpm)	160 gpm (606 lpm)	177 gpm (670 lpm)	234 gpm (886 lpm)	234 gpm (886 lpm)	273 gpm (1,033 lpm)	238 gpm (901 lpm)	219 gpm (829 lpm)	300 gpm (1,140 lpm)	43 gpm (163 lpm)
	Maximum Discharge Pressure (Head)	125 psi (8.6 bar)	125 psi (8.6 bar)	125 psi (8.6 bar)	125 psi (8.6 bar)	100 psi (6.9 bar)	125 psi (8.6 bar)	125 psi (8.6 bar)	125 psi (8.6 bar)	100 psi (6.9 bar)	125 psi (8.6 bar)	28 psi (2 bar)	25' (7.6m)
	Max Solids Handling	0.25" (6.4 mm)	0.25" (6.4 mm)	0.4375" (11.1 mm)	0.25" (6 mm)	0.25" (6.3 mm)	0.375" (9.5 mm)	0.375" (9.5 mm)	0.375" (9.5 mm)	0.71" (18 mm)	1.125" (28.6 mm)	1.50" (6mm)	0.38" (9.5mm)
	Filter Press Feed (General Industry)	A	C	A	B	B	A	C	A	B	C	X	X
TYPICAL DIAPHRAGM PUMP RENTAL APPLICATIONS	Sump / Pit Evacuation (General Industry)	A	A	A	C	C	B	A	A	C	B	A	X
	Tanker Car Unloading (General Industry)	B	C	B	B	B	A	C	A	A	X	X	X
	Filtration / Circulation (Machining / Automotive)	A	C	A	C	C	C	C	C	C	X	X	X
	Plant Shutdowns / Turn Around (Chemical)	B	C	B	A	A	B	C	A	A	B	C	X
	Mine / Quarry Dewatering (Mining)	A	A	A	C	B	A	A	A	C	B	A	X
	Emergency Response - Spills / Floods (All)	A	A	A	C	C	A	A	A	C	B	A	X
	Barge Cleaning / Transfer (Marine)	A	A	A	C	C	A	A	B	C	B	C	X
	Transfer - Latex, Paint, Chemical (Paints / Coatings)	A	C	A	C	C	A	C	A	C	C	X	X
	Manhole Dewatering (Utility Service)	B	A	B	C	C	C	A	C	C	C	B	A
	Chemical Dispensing (Chemical)	C	X	C	A	A	C	X	A	A	X	X	X
	Settling Pond / Mine Tailing Transfer (Mining)	A	A	A	C	C	A	A	A	C	B	B	X
	Tank Over / Circulation (Wine)	A	X	X	C	X	X	X	C	X	X	X	X
	Trench / Pit Dewatering (Construction)	A	A	A	C	C	A	A	C	X	A	A	A
	Pulp / Starch Transfer (Paper / Corrugator)	A	C	A	B	C	A	C	A	X	B	X	X
	Filling Molds, Slip, Glaze (Ceramic)	A	C	A	C	X	C	C	A	X	X	X	X
	Driller Mud Make-Up (Oil and Gas)	A	A	A	B	X	A	A	B	X	B	X	X
	Spray / Transfer Asphalt Sealing (Road Maintenance)	A	C	A	C	X	B	C	C	X	X	X	X
	Containment Field / Berm Transfer (Tank Farms)	A	B	A	B	C	A	B	A	X	B	C	X
	Natural Disasters Dewatering (All)	A	A	A	C	C	A	A	A	C	B	A	B

Notes: * Coated aluminum air sections are available (PTFE Coated or Nickel Plated). E3 Non-Metallic units come standard with Epoxy coated aluminum air section or can be ordered with an optional PTFE coating. ** If a Polypropylene air section is required, order a U2 Ultra-Matic Series product (U2PP).

A = Frequently Used B = Often Used C = Sometimes Used X = Never Used

Material Codes: AL = Aluminum, CI = Cast Iron, H = Alloy C, SS = Stainless Steel, PP = Polypropylene, K = PVDF

**DELIVERING QUALITY,
INTERCHANGEABLE PUMPING SOLUTIONS**

5 YEAR
LIMITED
WARRANTY



VERSA-MATIC®
Warren Rupp, Inc.
A Unit of IDEX Corporation
800 North Main Street
Mansfield, OH 44902 USA

Phone: 419.526.7296
Fax: 419.526.7289
versamatic.com



Distributed By:

©Copyright 2016 Warren Rupp, Inc. All Rights Reserved.

VM_Rentalbro-rev1216