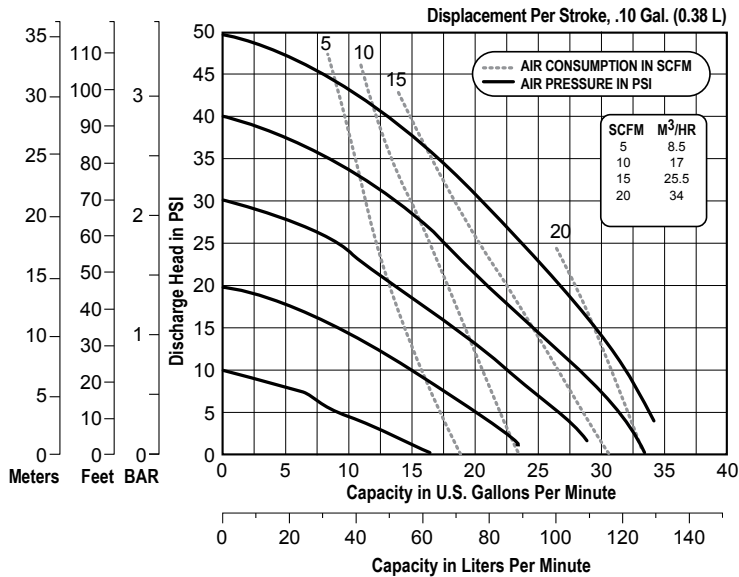


E1 DATA SHEET

SPECIFICATIONS & PERFORMANCE

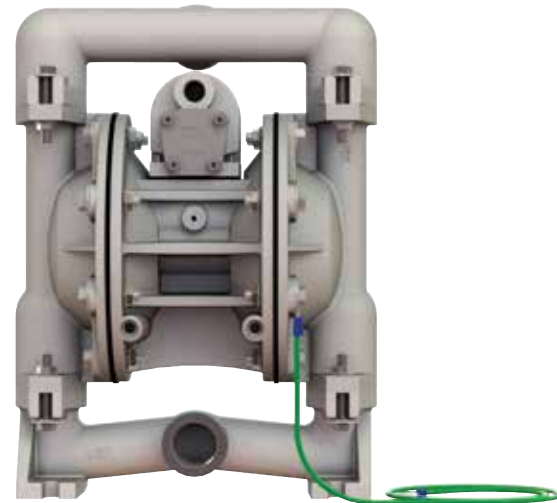
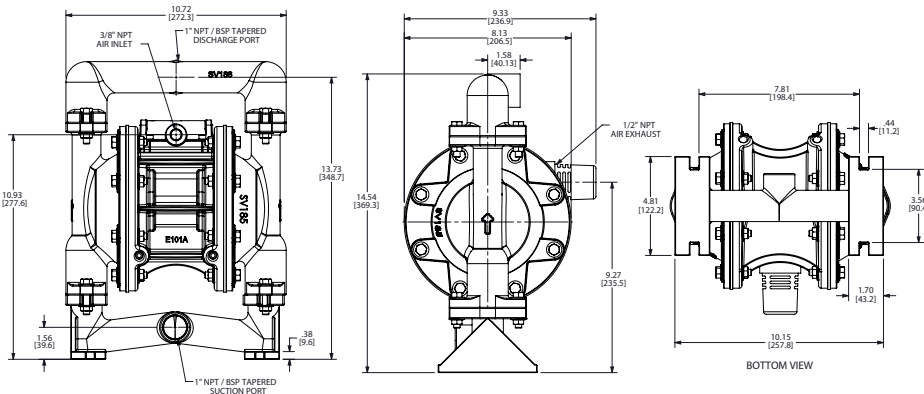
1" Elima-Matic Bolted Metal – UL Listed with Metallic Center Section

PERFORMANCE



NOTE: Performance based on the following: elastomeric fitted pump, flooded suction, water at ambient conditions. The use of other materials and varying hydraulic conditions may result in deviations in excess of 5%.

DIMENSIONS



SPECIFICATIONS

Flow Rate

Adjustable to . . . 0-35 gpm (132 lpm)

Port Size

Suction 1" Female NPT (BSP)

Discharge . . . 1" Female NPT (BSP)

Air Inlet 3/8" NPT

Air Exhaust 1/2" NPT

Suction Lift

Dry 15' (4.6 m)

Wet 25' (7.6 m)

Max Solid Size (Diameter)

. 1/8" (3.2 mm)

Max Noise Level 91 dB(A)

Shipping Weights

Aluminum 31 lbs (14 kg)

Stainless Steel 36 lbs (16.3 kg)



VERSAMATIC®

Warren Rupp, Inc. | A Unit of IDEX Corporation
800 North Main Street | Mansfield, OH 44902 USA
Phone: 419.526.7296 | Fax: 419.526.7289

VERSAMATIC.COM

e1mdICdsATEXUL-rev0519

©Copyright 2019 Warren Rupp, Inc. All Rights Reserved.