

SERVICE & OPERATING MANUAL

ORIGINAL INSTRUCTIONS

E2

2" Elima-Matic Bolted Plastic

with Metal Center Section

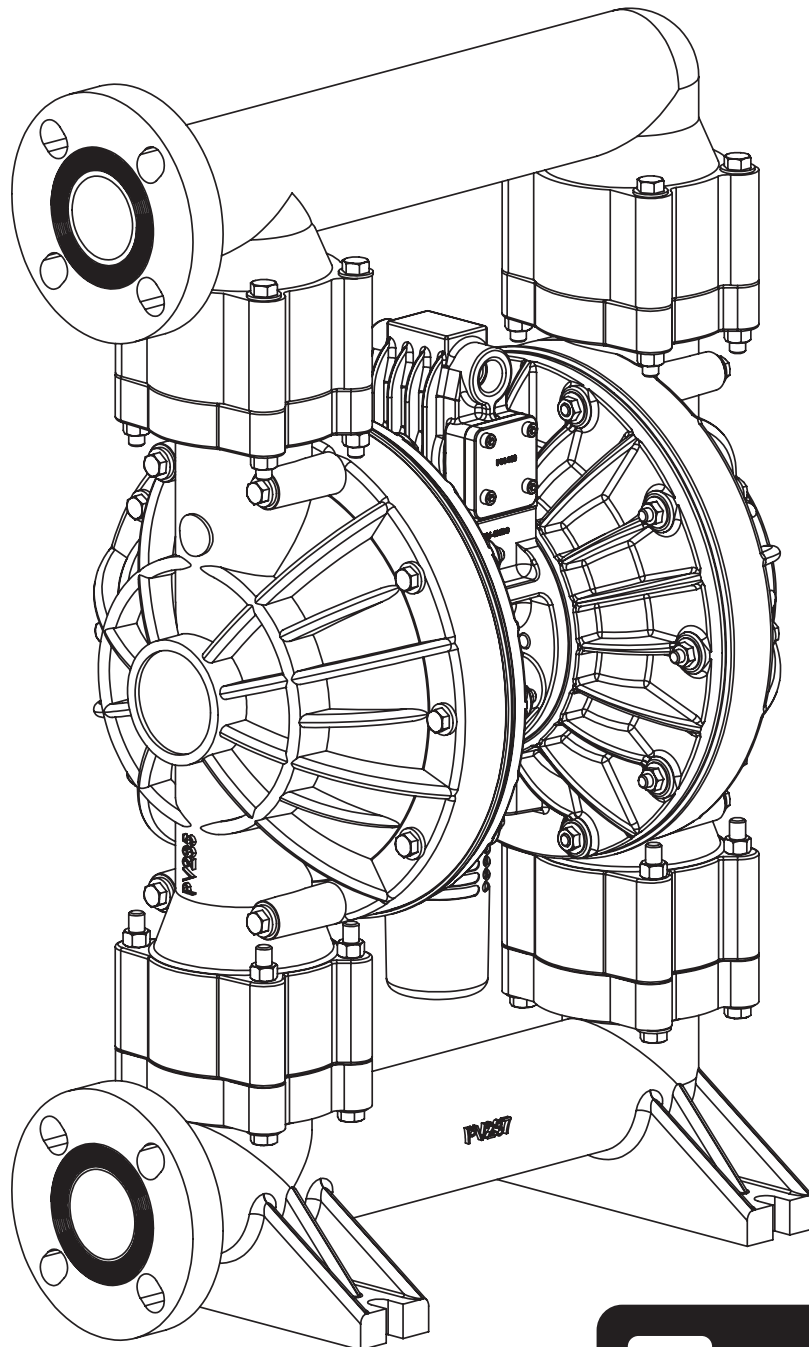
E2 Plastic Pumps

- Polypropylene
- PVDF

EAC CE UK



intertek
Total Quality Assured
ISO 9001 Certified
ISO 14001 Certified



VERSAMATIC®

Safety Information

! IMPORTANT



Read the safety warnings and instructions in this manual before pump installation and start-up. Failure to comply with the recommendations stated in this manual could damage the pump and void factory warranty.



When the pump is used for materials that tend to settle out or solidify, the pump should be flushed after each use to prevent damage. In freezing temperatures the pump should be completely drained between uses.

! CAUTION



Before pump operation, inspect all fasteners for loosening caused by gasket creep. Retighten loose fasteners to prevent leakage. Follow recommended torques stated in this manual.



Plastic pumps and plastic components are not UV stabilized. Ultraviolet radiation can damage these parts and negatively affect material properties. Do not expose to UV light for extended periods of time.



WARNING

Pump not designed, tested or certified to be powered by compressed natural gas. Powering the pump with natural gas will void the warranty.



WARNING

The use of non-OEM replacement parts will void (or negate) agency certifications, including CE, ATEX, CSA, 3A and EC1935 compliance (Food Contact Materials). Warren Rupp, Inc. cannot ensure nor warrant non-OEM parts to meet the stringent requirements of the certifying agencies.

! WARNING



When used for toxic or aggressive fluids, the pump should always be flushed clean prior to disassembly.



Before maintenance or repair, shut off the compressed air line, bleed the pressure, and disconnect the air line from the pump. Be certain that approved eye protection and protective clothing are worn at all times. Failure to follow these recommendations may result in serious injury or death.



Airborne particles and loud noise hazards. Wear eye and ear protection.



In the event of diaphragm rupture, pumped material may enter the air end of the pump, and be discharged into the atmosphere. If pumping a product that is hazardous or toxic, the air exhaust must be piped to an appropriate area for safe containment.



Take action to prevent static sparking. Fire or explosion can result, especially when handling flammable liquids. The pump, piping, valves, containers and other miscellaneous equipment must be properly grounded.



This pump is pressurized internally with air pressure during operation. Make certain that all fasteners and piping connections are in good condition and are reinstalled properly during reassembly.



Use safe practices when lifting

ATEX Pumps - Conditions For Safe Use

1. Ambient temperature range is as specified in tables 1 & 2 on the next page
2. ATEX compliant pumps are suitable for use in explosive atmospheres when the equipment is properly grounded in accordance with local electrical codes
3. Conductive Polypropylene, conductive Acetal or conductive PVDF pumps are not to be installed in applications where the pumps may be subjected to oil, greases and hydraulic liquids.
4. When operating pumps equipped with non-conductive diaphragms that exceed the maximum permissible projected area, as defined in EN ISO 80079-36 : 2016 section 6.7.5 table 8, the following protection methods must be applied
 - Equipment is always used to transfer electrically conductive fluids or
 - Explosive environment is prevented from entering the internal portions of the pump, i.e. dry running.

Table of Contents

SECTION 1: PUMP SPECIFICATIONS.....1

- Nomenclature
- Performance
- Materials
- Dimensional Drawings

SECTION 2: INSTALLATION & OPERATION ...8

- Principle of Pump Operation
- Typical Installation Guide
- Troubleshooting

SECTION 3: EXPLODED VIEW.....11

- Composite Drawings
- Parts List
- Composite Drawings
- Parts List
- Materials Code

SECTION 4: WARRANTY & CERTIFICATES ..16

- Warranty
- EU Declaration of Conformity - Machinery Directive

1: PUMP SPECS

2: INSTAL & OP

3: EXP VIEW

4: WARRANTY

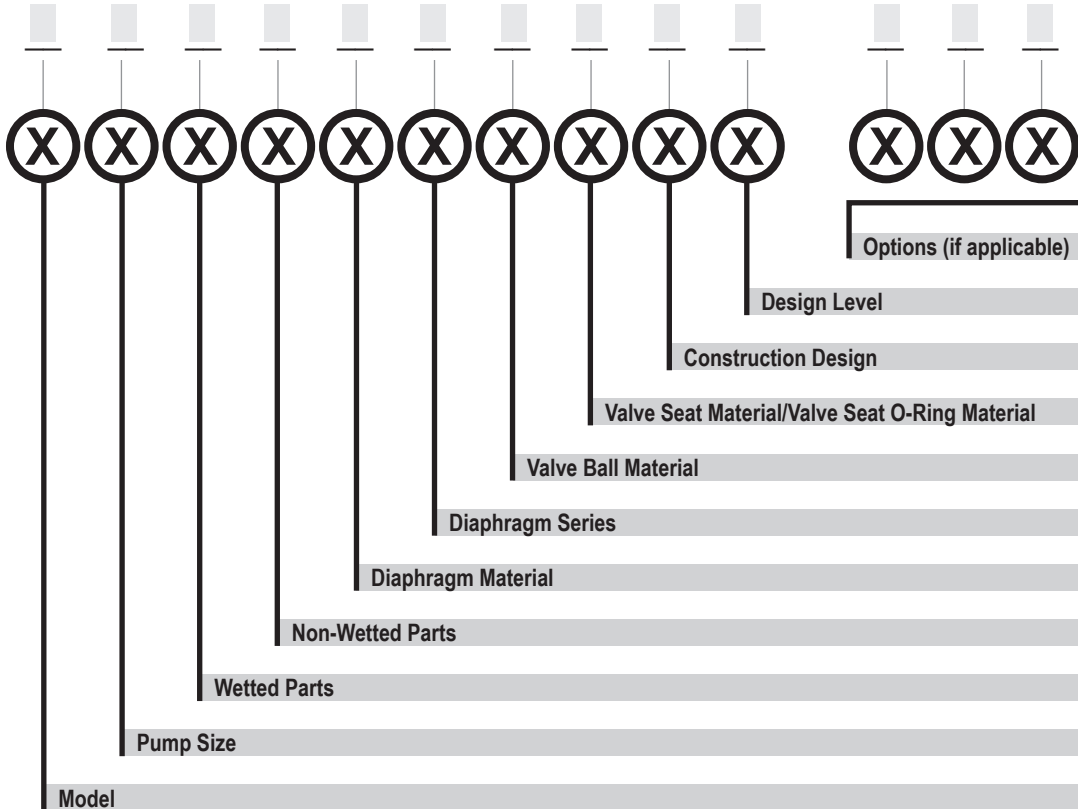


Explanation of Pump Nomenclature

Your Serial #: (fill in from pump nameplate) _____

Your Model #:
(fill in from pump
nameplate)

Model #:



Model

E Elima-Matic
U Ultra-Matic
V V-Series

Pump Size

6 1/4"
8 3/8"
5 1/2"
7 3/4"
1 1"
4 1-1/4" or 1-1/2"
2 2"
3 3"

Wetted Parts

A Aluminum
C Cast Iron
S Stainless Steel
H Alloy C
P Polypropylene
K Kynar
G Groundable Acetal
B Aluminum (screen mount)

Non-Wetted Parts

A Aluminum
S Stainless Steel
P Polypropylene
G Groundable Acetal
Z PTFE-coated Aluminum
J Nickel-plated Aluminum
C Cast Iron
Q Epoxy-Coated Aluminum

Diaphragm Material

1 Neoprene
2 Nitrile (Nitrile)
3 FKM (Fluorocarbon)
4 EPDM
5 PTFE
6 Santoprene XL
7 Hytrel
Y FDA Santoprene

Diaphragm Series

R Rugged
D Dome
X Thermo-Matic
T Tef-Matic (2-piece)
B Versa-Tuff (1-piece)
F FUSION (one-piece integrated plate)

Valve Ball Material Valve

1 Neoprene
2 Nitrile
3 (FKM) Fluorocarbon
4 EPDM
5 PTFE
6 Santoprene XL
7 Hytrel
8 Polyurethane
A Acetal
S Stainless Steel
Y FDA Santoprene

Seat/Valve Seat O-Ring Material

1 Neoprene
2 Nitrile
3 (FKM) Fluorocarbon
4 EPDM
5 PTFE
6 Santoprene XL
7 Hytrel
8 Polyurethane
A Aluminum w/ PTFE O-Rings
S Stainless Steel w/ PTFE O-Rings
C Carbon Steel w/ PTFE O-Rings
H Alloy C w/ PTFE O-Rings
T PTFE Encapsulated Silicone O-Rings
Y FDA Santoprene

Construction Design

9 Bolted
0 Clamped

Design Level

A
C

Miscellaneous Options

B BSP Tapered Thread
CP Center Port
ATEX ATEX Compliant
FP Food Processing
SP Sanitary Pump
HP High Pressure
OE Original Elima-Matic
F Flap Valve
HD Horizontal Discharge
3A 3-A Certified
UL UL Listed
OB Oil Bottle

*More than one option may be specified for a particular pump model.

Materials

| Material Profile: | Operating Temperatures: | |
|---|-------------------------|----------------|
| | Max. | Min. |
| CAUTION! Operating temperature limitations are as follows: | | |
| Conductive Acetal: Tough, impact resistant, ductile. Good abrasion resistance and low friction surface. Generally inert, with good chemical resistance except for strong acids and oxidizing agents. | 190°F 88°C | -20°F -29°C |
| EPDM: Shows very good water and chemical resistance. Has poor resistance to oils and solvents, but is fair in ketones and alcohols. | 280°F 138°C | -40°F -40°C |
| FKM: (Fluorocarbon) Shows good resistance to a wide range of oils and solvents; especially all aliphatic, aromatic and halogenated hydrocarbons, acids, animal and vegetable oils. Hot water or hot aqueous solutions (over 70°F) will attack FKM. | 350°F 177°C | -40°F -40°C |
| Hytrel®: Good on acids, bases, amines and glycols at room temperatures only. | 220°F 104°C | -20°F -29°C |
| Neoprene: All purpose. Resistance to vegetable oils. Generally not affected by moderate chemicals, fats, greases and many oils and solvents. Generally attacked by strong oxidizing acids, ketones, esters and nitro hydrocarbons and chlorinated aromatic hydrocarbons. | 200°F 93°C | -10°F -23°C |
| Nitrile: General purpose, oil-resistant. Shows good solvent, oil, water and hydraulic fluid resistance. Should not be used with highly polar solvents like acetone and MEK, ozone, chlorinated hydrocarbons and nitro hydrocarbons. | 190°F 88°C | -10°F -23°C |
| Nylon: 6/6 High strength and toughness over a wide temperature range. Moderate to good resistance to fuels, oils and chemicals. | 180°F 82°C | 32°F 0°C |

| | | |
|--|----------------|----------------|
| Polypropylene: A thermoplastic polymer. Moderate tensile and flex strength. Resists strong acids and alkali. Attacked by chlorine, fuming nitric acid and other strong oxidizing agents. | 180°F 82°C | 32°F 0°C |
| PVDF: (Polyvinylidene Fluoride) A durable fluoroplastic with excellent chemical resistance. Excellent for UV applications. High tensile strength and impact resistance. | 250°F 121°C | 0°F -18°C |
| Santoprene®: Injection molded thermoplastic elastomer with no fabric layer. Long mechanical flex life. Excellent abrasion resistance. | 275°F 135°C | -40°F -40°C |
| UHMW PE: A thermoplastic that is highly resistant to a broad range of chemicals. Exhibits outstanding abrasion and impact resistance, along with environmental stress-cracking resistance. | 180°F 82°C | -35°F -37°C |
| Urethane: Shows good resistance to abrasives. Has poor resistance to most solvents and oils. | 150°F 66°C | 32°F 0°C |
| Virgin PTFE: (PFA/TFE) Chemically inert, virtually impervious. Very few chemicals are known to chemically react with PTFE; molten alkali metals, turbulent liquid or gaseous fluorine and a few fluoro-chemicals such as chlorine trifluoride or oxygen difluoride which readily liberate free fluorine at elevated temperatures. | 220°F 104°C | -35°F -37°C |
| <i>Maximum and Minimum Temperatures are the limits for which these materials can be operated. Temperatures coupled with pressure affect the longevity of diaphragm pump components. Maximum life should not be expected at the extreme limits of the temperature ranges.</i> | | |
| Metals: | | |
| Alloy C: Equal to ASTM494 CW-12M-1 specification for nickel and nickel alloy. | | |
| Stainless Steel: Equal to or exceeding ASTM specification A743 CF-8M for corrosion resistant iron chromium, iron chromium nickel and nickel based alloy castings for general applications. Commonly referred to as 316 Stainless Steel in the pump industry. | | |

For specific applications, always consult the Chemical Resistance Chart.

Note: This document is a high level guide. Please be aware that not all model and or material combinations are possible for all sizes. Please consult factory or your distributor for specific details.

Performance

E2 - 2" Bolted Plastic Pump – Metal Center ELASTOMERIC AND TPE FITTED - Domed

Flow Rate

Adjustable to 0-177 gpm (670 lpm)

Port Size

Suction 2" ANSI, 150 Class (DIN 50)

Discharge 2" ANSI, 150 Class (DIN 50)

Air Inlet 1/2" NPT

Air Exhaust 1" NPT

Suction Lift

Dry 16' (4.9 m)

Wet 32' (9.8 m)

Max Solid Size (Diameter)

. 1/4" (6.3 mm)

Max Noise Level 96 dB(A)

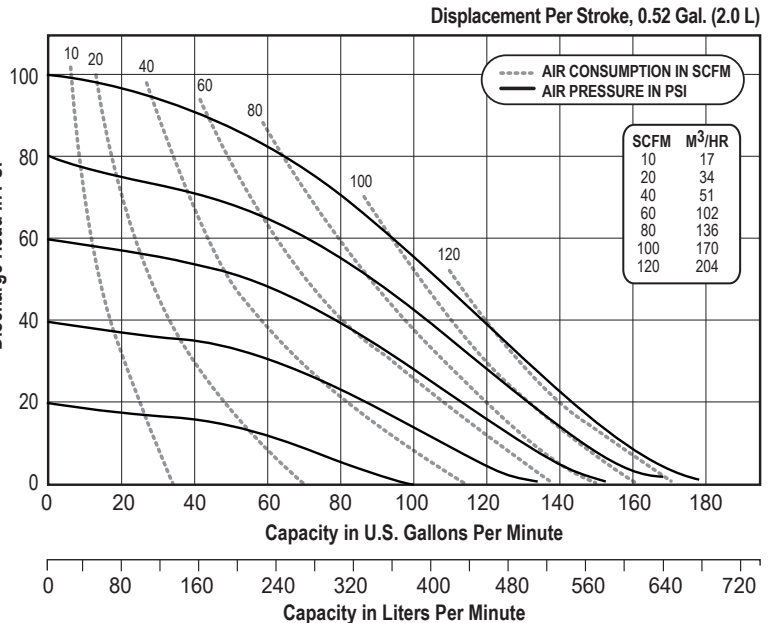
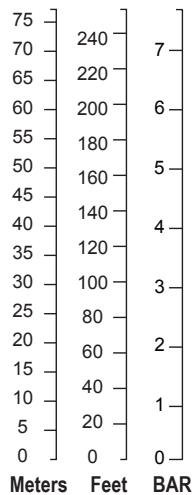
Shipping Weights

Polypropylene 69 lbs (31.3 kg)

w/ center port options 73 lbs (33.1 kg)

PVDF 93 lbs (42.2 kg)

w/ center port options 100 lbs (45.4 kg)



NOTE: Performance based on the following: elastomeric fitted pump, flooded suction, water at ambient conditions. The use of other materials and varying hydraulic conditions may result in deviations in excess of 5%.

E2 - 2" Bolted Plastic Pump – Metal Center PTFE FITTED

Flow Rate

Adjustable to 0-145 gpm (549 lpm)

Port Size

Suction 2" ANSI, 150 Class (DIN 50)

Discharge 2" ANSI, 150 Class (DIN 50)

Air Inlet 1/2" NPT

Air Exhaust 1" NPT

Suction Lift

Dry 8' (2.4 m)

Wet 30' (9.1 m)

Max Solid Size (Diameter)

. 1/4" (6.3 mm)

Max Noise Level 99 dB(A)

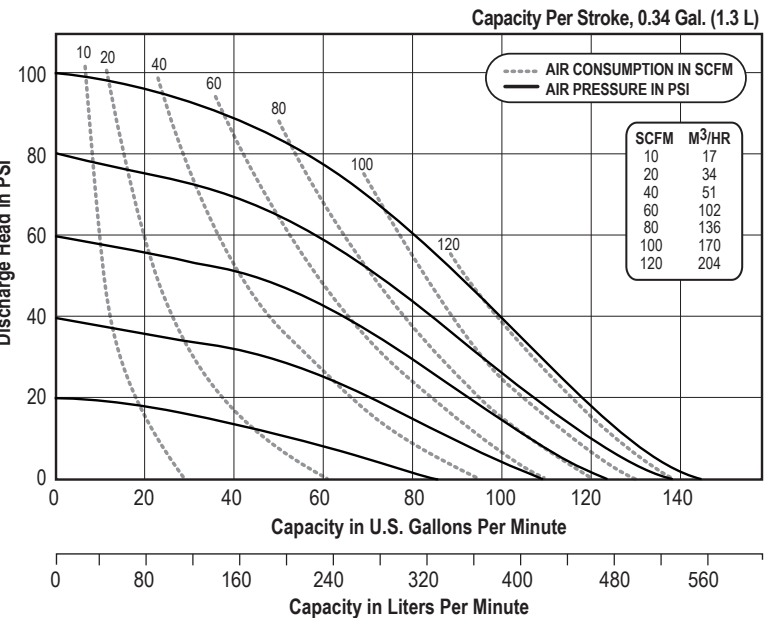
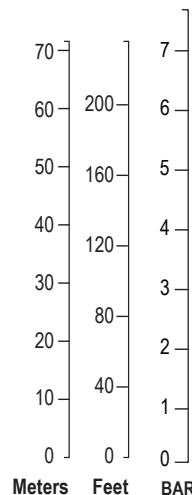
Shipping Weights

Polypropylene 69 lbs (31.3 kg)

w/ center port options 73 lbs (33.1 kg)

PVDF 93 lbs (42.2 kg)

w/ center port options 100 lbs (45.4 kg)



NOTE: Performance based on the following: elastomeric fitted pump, flooded suction, water at ambient conditions. The use of other materials and varying hydraulic conditions may result in deviations in excess of 5%.

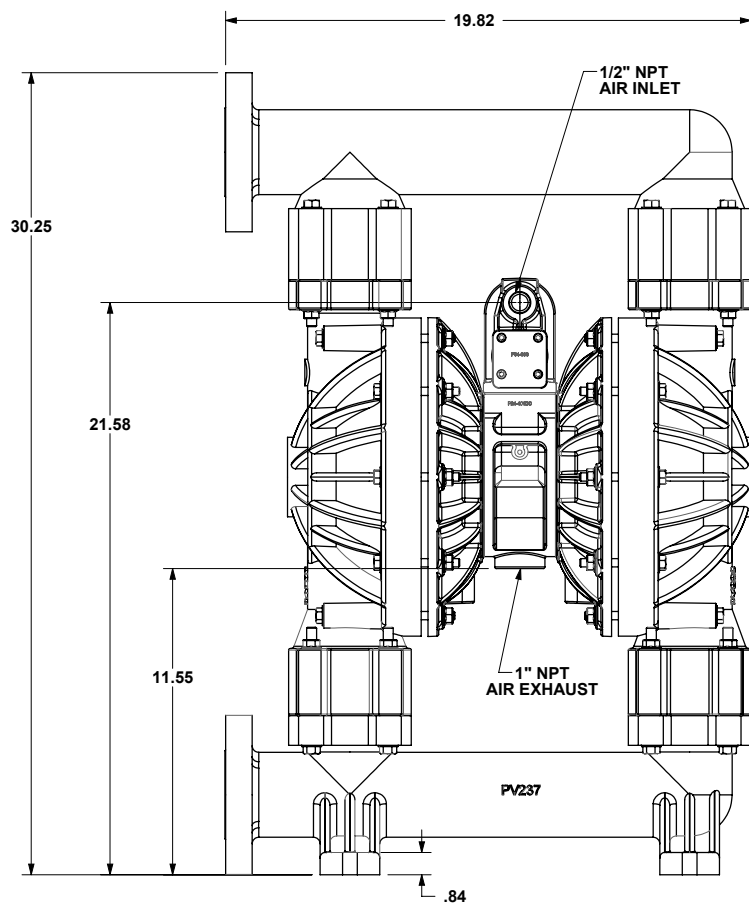
Dimensional Drawings

E2 Bolted Plastic

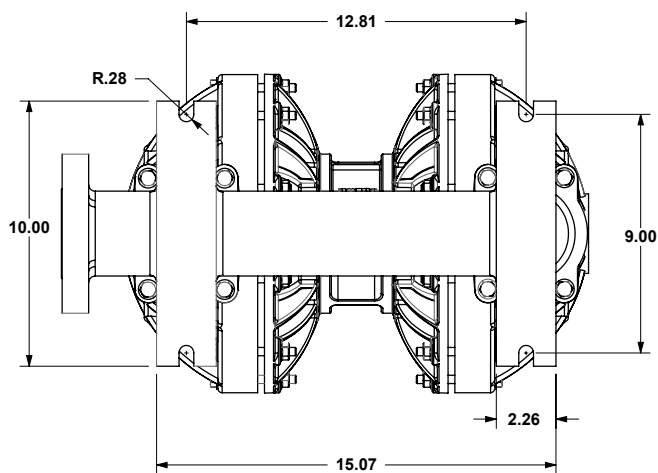
Dimensions in inches (mm dimensions in brackets)

The dimensions on this drawing are for reference only. A certified drawing can be requested if physical dimensions are needed.

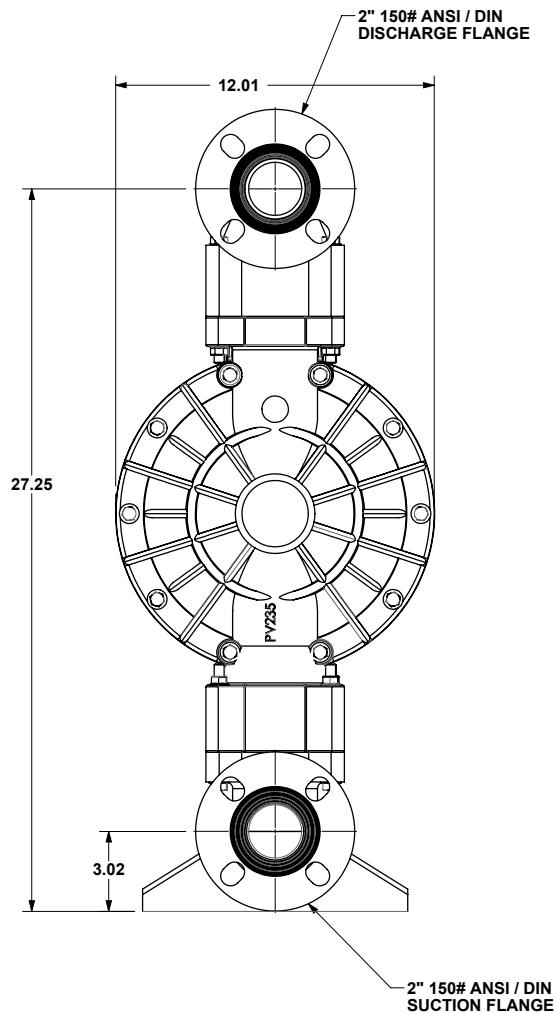
VIEW



SI / DIN



BOTTOM VIEW



1: PUMP SPECS

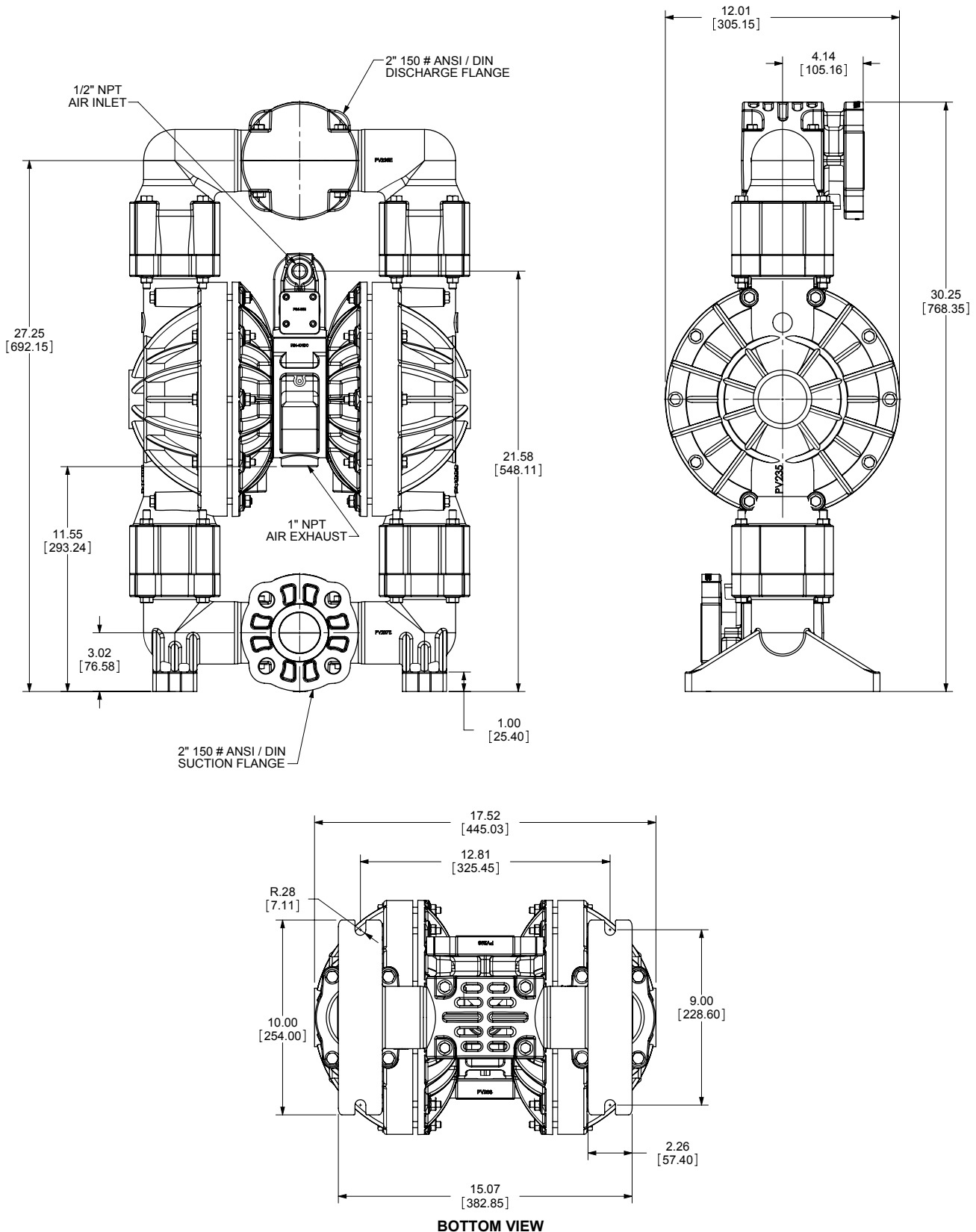
Dimensional Drawings

E2 Bolted Plastic - Optional Center Porting

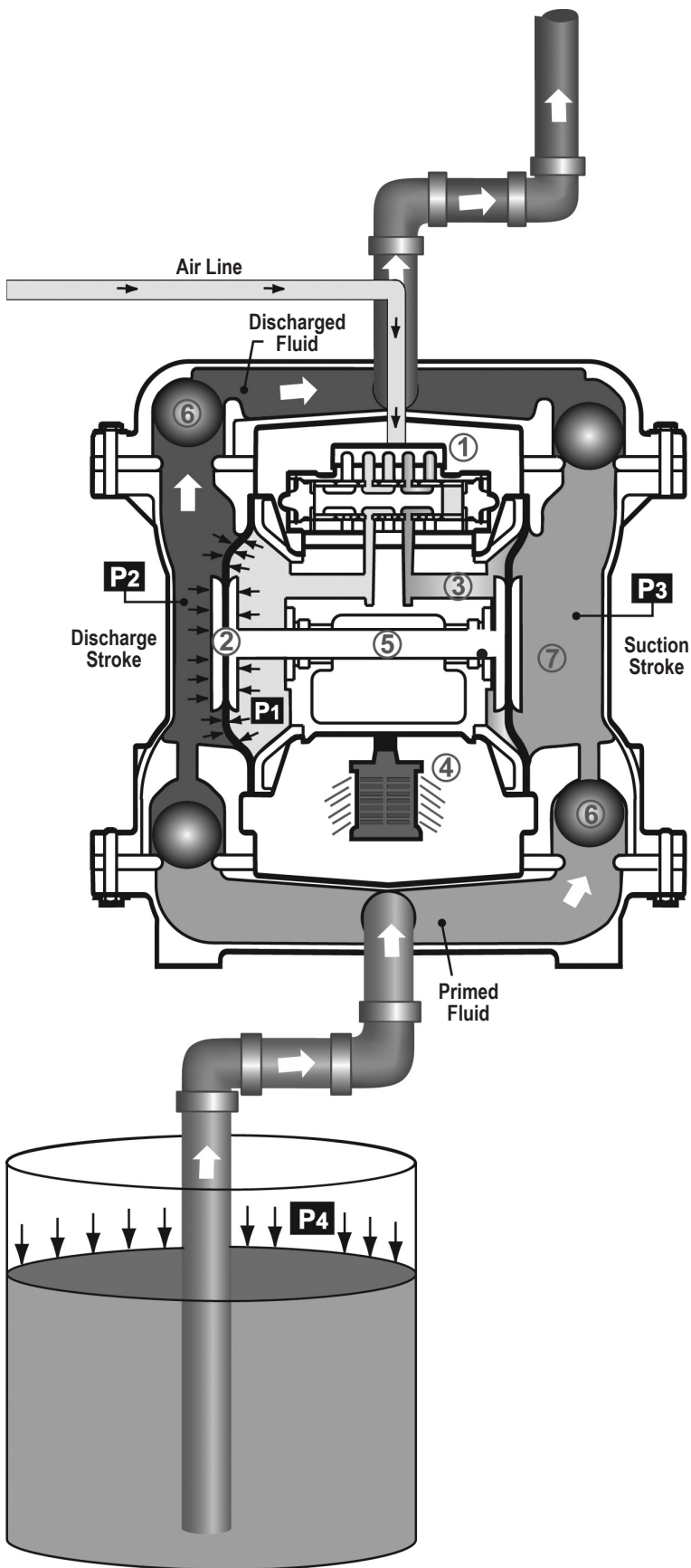
Dimensions in inches (mm dimensions in brackets)

The dimensions on this drawing are for reference only. A certified drawing can be requested if physical dimensions are needed.

1: PUMP SPECS



Principle of Pump Operation



Air-Operated Double Diaphragm (AODD) pumps are powered by compressed air or nitrogen.

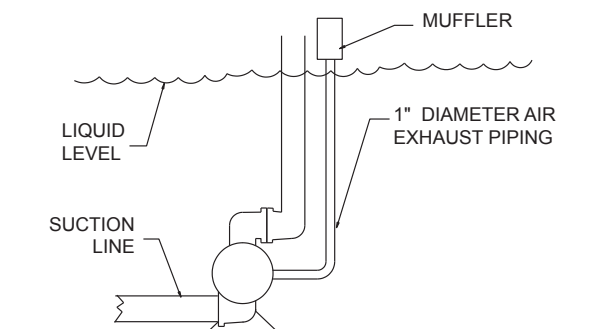
The main directional (air) control valve distributes compressed air to an air chamber, exerting uniform pressure over the inner surface of the diaphragm. At the same time, the exhausting air from behind the opposite diaphragm is directed through the air valve assembly(s) to an exhaust port.

As inner chamber pressure (**P1**) exceeds liquid chamber pressure (**P2**), the rod connected diaphragms shift together creating discharge on one side and suction on the opposite side. The discharged and primed liquid's directions are controlled by the check valves (ball or flap) orientation.

The pump primes as a result of the suction stroke. The suction stroke lowers the chamber pressure (**P3**) increasing the chamber volume. This results in a pressure differential necessary for atmospheric pressure (**P4**) to push the fluid through the suction piping and across the suction side check valve and into the outer fluid chamber.

Suction (side) stroking also initiates the reciprocating (shifting, stroking or cycling) action of the pump. The suction diaphragm's movement is mechanically pulled through its stroke. The diaphragm's inner plate makes contact with an actuator plunger aligned to shift the pilot signaling valve. Once actuated, the pilot valve sends a pressure signal to the opposite end of the main directional air valve, redirecting the compressed air to the opposite inner chamber.

SUBMERGED ILLUSTRATION



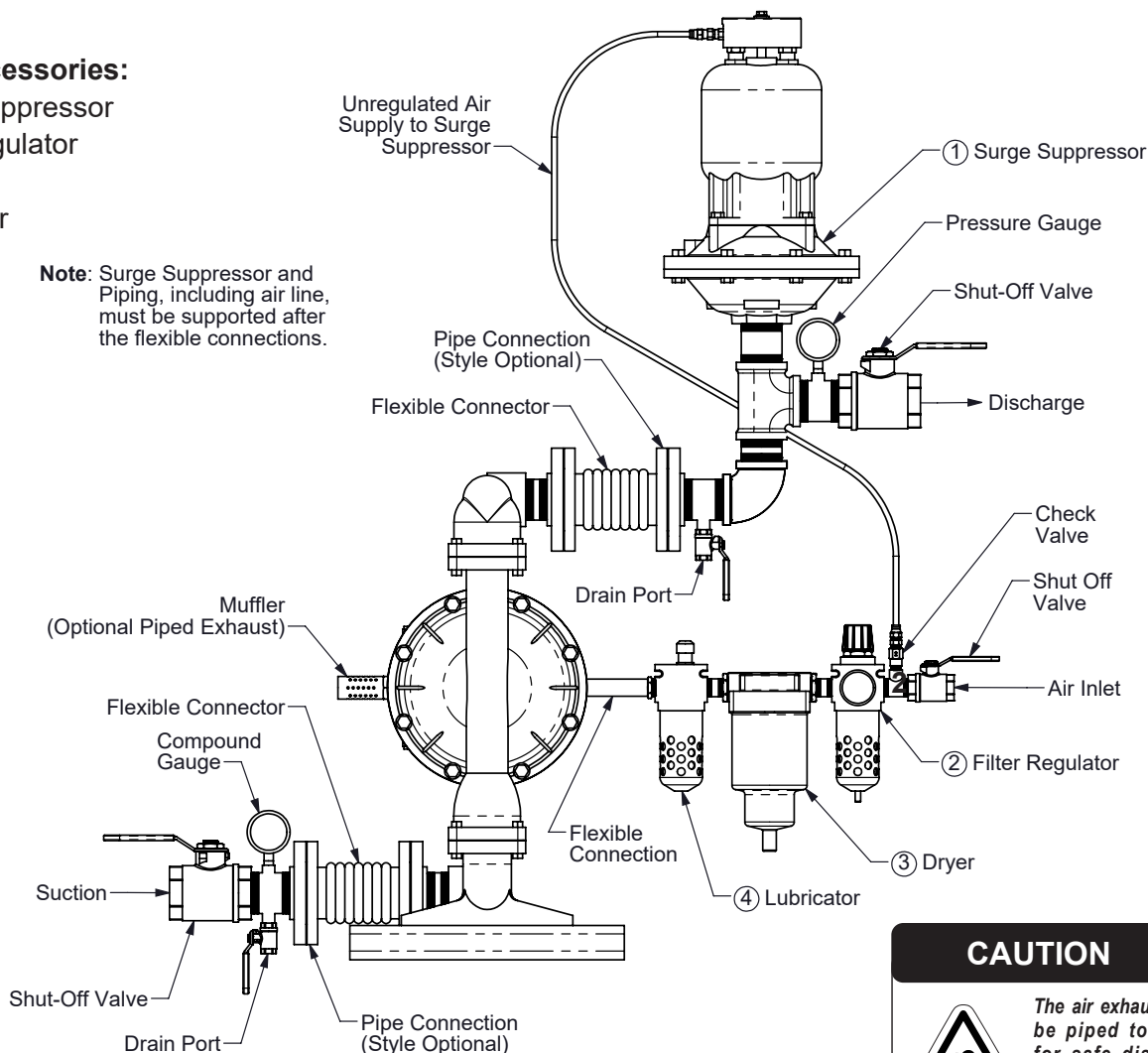
Pump can be submerged if the pump materials of construction are compatible with the liquid being pumped. The air exhaust must be piped above the liquid level. When the pumped product source is at a higher level than the pump (flooded suction condition), pipe the exhaust higher than the product source to prevent siphoning spills.

Recommended Installation Guide

Available Accessories:

1. Surge Suppressor
2. Filter/Regulator
3. Air Dryer
4. Lubricator

Note: Surge Suppressor and Piping, including air line, must be supported after the flexible connections.



CAUTION



The air exhaust should be piped to an area for safe disposition of the product being pumped, in the event of a diaphragm failure.

Installation And Start-Up

Locate the pump as close to the product being pumped as possible. Keep the suction line length and number of fittings to a minimum. Do not reduce the suction line diameter.

Air Supply

Connect the pump air inlet to an air supply with sufficient capacity and pressure to achieve desired performance. A pressure regulating valve should be installed to insure air supply pressure does not exceed recommended limits.

Air Valve Lubrication

The air distribution system is designed to operate **WITHOUT** lubrication. This is the standard mode of operation. If lubrication is desired, install an air line lubricator set to deliver one drop of SAE 10 non-detergent oil for every 20 SCFM (9.4 liters/sec.) of air the pump consumes. Consult the Performance Curve to determine air consumption.

Air Line Moisture

Water in the compressed air supply may cause icing or freezing of the exhaust air, causing the pump to cycle erratically or stop operating. Water in the air supply can be reduced by using a point-of-use air dryer.

Air Inlet And Priming

To start the pump, slightly open the air shut-off valve. After the pump primes, the air valve can be opened to increase air flow as desired. If opening the valve increases cycling rate, but does not increase the rate of flow, cavitation has occurred. The valve should be closed slightly to obtain the most efficient air flow to pump flow ratio.

Troubleshooting Guide

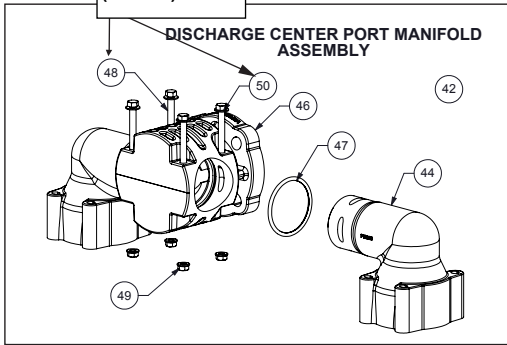
| Symptom: | Potential Cause(s): | Recommendation(s): |
|---|---|--|
| Pump Cycles Once | Deadhead (system pressure meets or exceeds air supply pressure). | Increase the inlet air pressure to the pump. Pump is designed for 1:1 pressure ratio at zero flow. (Does not apply to high pressure 2:1 units). |
| | Air valve or intermediate gaskets installed incorrectly. | Install gaskets with holes properly aligned. |
| | Bent or missing actuator plunger. | Remove pilot valve and inspect actuator plungers. |
| Pump Will Not Operate / Cycle | Pump is over lubricated. | Set lubricator on lowest possible setting or remove. Units are designed for lube free operation. |
| | Lack of air (line size, PSI, CFM). | Check the air line size and length, compressor capacity (HP vs. cfm required). |
| | Check air distribution system. | Disassemble and inspect main air distribution valve, pilot valve and pilot valve actuators. |
| | Discharge line is blocked or clogged manifolds. | Check for inadvertently closed discharge line valves. Clean discharge manifolds/piping. |
| | Deadhead (system pressure meets or exceeds air supply pressure). | Increase the inlet air pressure to the pump. Pump is designed for 1:1 pressure ratio at zero flow. (Does not apply to high pressure 2:1 units). |
| | Blocked air exhaust muffler. | Remove muffler screen, clean or de-ice, and re-install. |
| | Pumped fluid in air exhaust muffler. | Disassemble pump chambers. Inspect for diaphragm rupture or loose diaphragm plate assembly. |
| | Pump chamber is blocked. | Disassemble and inspect wetted chambers. Remove or flush any obstructions. |
| Pump Cycles and Will Not Prime or No Flow | Cavitation on suction side. | Check suction condition (move pump closer to product). |
| | Check valve obstructed. Valve ball(s) not seating properly or sticking. | Disassemble the wet end of the pump and manually dislodge obstruction in the check valve pocket. Clean out around valve ball cage and valve seat area. Replace valve ball or valve seat if damaged. Use heavier valve ball material. |
| | Valve ball(s) missing (pushed into chamber or manifold). | Worn valve ball or valve seat. Worn fingers in valve ball cage (replace part). Check Chemical Resistance Guide for compatibility. |
| | Valve ball(s)/seat(s) damaged or attacked by product. | Check Chemical Resistance Guide for compatibility. |
| | Check valve and/or seat is worn or needs adjusting. | Inspect check valves and seats for wear and proper setting. Replace if necessary. |
| | Suction line is blocked. | Remove or flush obstruction. Check and clear all suction screens or strainers. |
| | Excessive suction lift. | For lifts exceeding 20' of liquid, filling the chambers with liquid will prime the pump in most cases. |
| | Suction side air leakage or air in product. | Visually inspect all suction-side gaskets and pipe connections. |
| | Pumped fluid in air exhaust muffler. | Disassemble pump chambers. Inspect for diaphragm rupture or loose diaphragm plate assembly. |
| | | Set lubricator on lowest possible setting or remove. Units are designed for lube free operation. |
| Pump Cycles Running Sluggish/Stalling, Flow Unsatisfactory | Over lubrication. | Set lubricator on lowest possible setting or remove. Units are designed for lube free operation. |
| | Icing. | Remove muffler screen, de-ice, and re-install. Install a point of use air drier. |
| | Clogged manifolds. | Clean manifolds to allow proper air flow |
| | Deadhead (system pressure meets or exceeds air supply pressure). | Increase the inlet air pressure to the pump. Pump is designed for 1:1 pressure ratio at zero flow. (Does not apply to high pressure 2:1 units). |
| | Cavitation on suction side. | Check suction (move pump closer to product). |
| | Lack of air (line size, PSI, CFM). | Check the air line size, length, compressor capacity. |
| | Excessive suction lift. | For lifts exceeding 20' of liquid, filling the chambers with liquid will prime the pump in most cases. |
| | Air supply pressure or volume exceeds system hd. | Decrease inlet air (press. and vol.) to the pump. Pump is cavitating the fluid by fast cycling. |
| | Undersized suction line. | Meet or exceed pump connections. |
| | Restrictive or undersized air line. | Install a larger air line and connection. |
| | Suction side air leakage or air in product. | Visually inspect all suction-side gaskets and pipe connections. |
| | Suction line is blocked. | Remove or flush obstruction. Check and clear all suction screens or strainers. |
| | Pumped fluid in air exhaust muffler. | Disassemble pump chambers. Inspect for diaphragm rupture or loose diaphragm plate assembly. |
| | Check valve obstructed. | Disassemble the wet end of the pump and manually dislodge obstruction in the check valve pocket. |
| | Check valve and/or seat is worn or needs adjusting. | Inspect check valves and seats for wear and proper setting. Replace if necessary. |
| | Entrained air or vapor lock in chamber(s). | Purge chambers through tapped chamber vent plugs. Purging the chambers of air can be dangerous. |
| Product Leaking Through Exhaust | Diaphragm failure, or diaphragm plates loose. | Replace diaphragms, check for damage and ensure diaphragm plates are tight. |
| | Diaphragm stretched around center hole or bolt holes. | Check for excessive inlet pressure or air pressure. Consult Chemical Resistance Chart for compatibility with products, cleaners, temperature limitations and lubrication. |
| Premature Diaphragm Failure | Cavitation. | Enlarge pipe diameter on suction side of pump. |
| | Excessive flooded suction pressure. | Move pump closer to product. Raise pump/place pump on top of tank to reduce inlet pressure. Install Back pressure device (Tech bulletin 41r). Add accumulation tank or pulsation dampener. |
| | Misapplication (chemical/physical incompatibility). | Consult Chemical Resistance Chart for compatibility with products, cleaners, temperature limitations and lubrication. |
| | Incorrect diaphragm plates or plates on backwards, installed incorrectly or worn. | Check Operating Manual to check for correct part and installation. Ensure outer plates have not been worn to a sharp edge. |
| Unbalanced Cycling | Excessive suction lift. | For lifts exceeding 20' of liquid, filling the chambers with liquid will prime the pump in most cases. |
| | Undersized suction line. | Meet or exceed pump connections. |
| | Pumped fluid in air exhaust muffler. | Disassemble pump chambers. Inspect for diaphragm rupture or loose diaphragm plate assembly. |
| | Suction side air leakage or air in product. | Visually inspect all suction-side gaskets and pipe connections. |
| | Check valve obstructed. | Disassemble the wet end of the pump and manually dislodge obstruction in the check valve pocket. |
| | Check valve and/or seat is worn or needs adjusting. | Inspect check valves and seats for wear and proper setting. Replace if necessary. |
| | Entrained air or vapor lock in chamber(s). | Purge chambers through tapped chamber vent plugs. |

For additional troubleshooting tips contact After Sales Support at service.warrenrupp@idexcorp.com or 419-524-8388

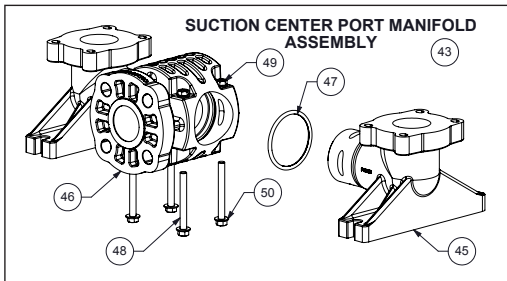
Composite Repair Parts Drawing - Elastomeric and TPE Fitted

Torque Setting:
180 in.-lbs.
(20 N-m)

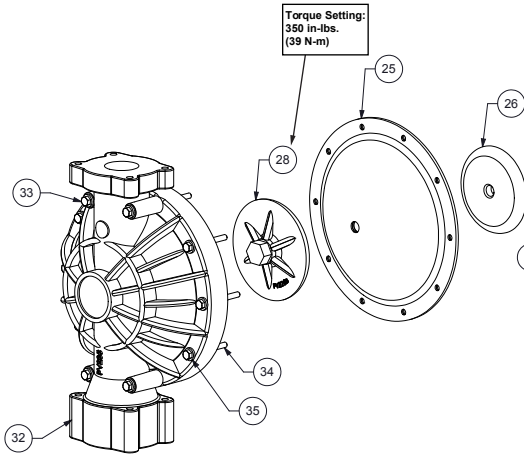
DISCHARGE CENTER PORT MANIFOLD ASSEMBLY



SUCTION CENTER PORT MANIFOLD ASSEMBLY



Torque Setting:
350 in.-lbs.
(39 N-m)

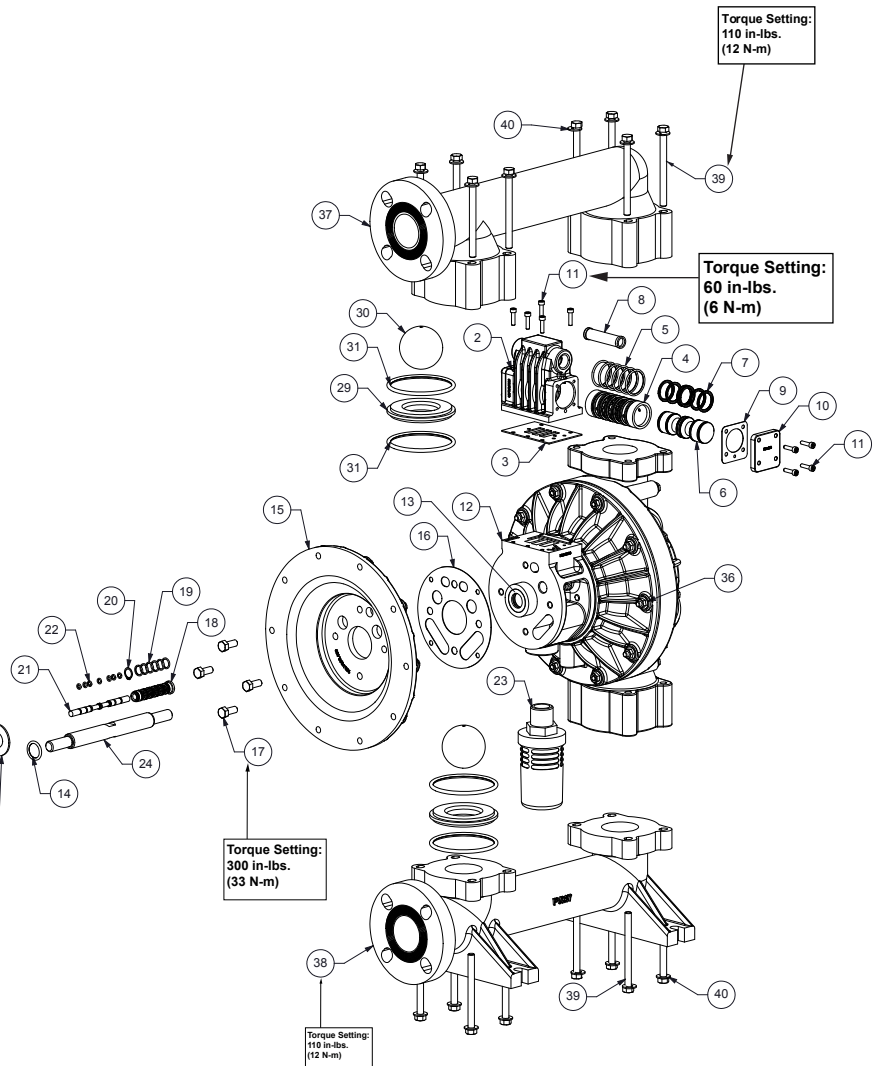


Torque Setting:
110 in.-lbs.
(12 N-m)

Torque Setting:
60 in.-lbs.
(6 N-m)

Torque Setting:
300 in.-lbs.
(33 N-m)

Torque Setting:
110 in.-lbs.
(12 N-m)



3: EXP VIEW

Composite Repair Parts List - Elastomeric and TPE Fitted

| Air Valve Assembly | | | | | |
|--|---------------|--|---------------------------------|-----------------|-----------------|
| Item # | Qty. | Description | Part Number | | |
| | | | Aluminum | Stainless Steel | Nickel Plated |
| | | Air Side Repair Kit (Includes Items 3.5,7,9,14,16,18-22) | 476.V019.000 | | |
| 1 | 1 | Valve Body (includes items 2-11) | 031.V002.156 | 031.V002.114 | 031.V002.332 |
| 2 | 1 | Valve Body | 095.V001.156 | 095.V001.114 | 095.V001.332 |
| 3 | 1 | Valve Body Gasket | P24-202 | | |
| 4 | 1 | Valve Sleeve | 755.V006.148 | | |
| 5 | 6 | O-ring | 560.206.360 | | |
| 6 | 1 | Valve Spool Assembly (Includes items 7) | 775.V001.000 | | |
| 7 | 6 | Glyde Ring Assembly | P34-204F | | |
| 8 | 1 | Air Valve Screen | P24-210 | P34-210 | P24-210 |
| 9 | 2 | End Cap Gasket | P24-205 | | |
| 10 | 2 | End Cap | P34-300 | SP34-300 | |
| 11 | 13 | Mounting Screws (8 included on item 1) | S1001 | | |
| Center Section Assembly | | | | | |
| Item # | Qty. | Description | Part Number | | |
| | | | Aluminum | Stainless Steel | Nickel Plated |
| 12 | 1 | Center Block Assembly (Includes item 13 & 14) | P24-400DC ASY | SP24-400 | P24-401NP |
| 13 | 2 | Bearing Sleeve | P31-403 | | |
| 14 | 2 | Main Shaft O-Ring | P24-403 | | |
| 15 | 2 | Air Chamber | 196.V003.156 | 196.V003.110 | 196.V003.332 |
| 16 | 2 | Air Chamber Gasket | 360.V001.360 | | |
| 17 | 8 | Bolt | P24-110 | SP24-110 | |
| | | Pilot Repair Kit (Includes Items 18-22) | 476.V018.000 | | |
| 18 | 1 | Pilot Sleeve Assembly (include item 19) | 755.V002.000 | | |
| 19 | 6 | O-ring | 560.101.358 | | |
| 20 | 1 | Retaining Ring | 675.037.080 | | |
| 21 | 1 | Pilot Spool Assembly (Includes item 22) | 775.V002.000 | | |
| 22 | 8 | O-ring | 560.023.358 | | |
| 23 | 1 | Muffler | 530.058.000 | | |
| Diaphragm Assembly / Elastomers | | | | | |
| Item # | Qty. | Description | Part Number | | |
| | | | Polypropylene | PVDF | |
| 24 | 1 | Main Shaft | P24-103 | | |
| 25 | 2 | Diaphragm (See Below Material Chart) | V227xx | | |
| 26 | 2 | Inner Diaphragm Plate (See Note 3) | V226B, V226BNP, V226BTC, SV226B | | |
| 27 | 2 | Bumper Washer | P24-501 | | |
| 28 | 2 | Outer Diaphragm Plate (See Note 1 Below) | PV226B | KV226B | |
| 29 | 4 | Valve Seat | PV240 | KV240 | |
| 30 | 4 | Valve Ball (See Below Material Chart) | V241xx | | |
| 31 | 8 | Valve Seat O-Ring (See Below Material Chart) | V258xx | | |
| Wet End Assembly | | | | | |
| Item # | Qty. | Description | Part Number | | |
| | | | Polypropylene | PVDF | |
| 32 | 2 | Water Chamber | PV235 | KV235 | |
| 33 | 8 | Large Bolt | SV250B | | |
| 34 | 12 | Small Bolt | SV250A | | |
| 35 | 20 | Washer | SV250C | | |
| 36 | 20 | Nut | SV185B | | |
| 37 | 1 | Discharge Manifold | PV236 | KV236 | |
| 38 | 1 | Suction Manifold | PV237 | KV237 | |
| 39 | 16 | Manifold Bolt | SV251A | | |
| 40 | 16 | Washer | SV302GA | | |
| 41 | 16 | Nut | SV251B | | |
| Optional Center Port Manifold Assembly | | | | | |
| Item # | Qty. | Description | Part Number | | |
| | | | Polypropylene | PVDF | |
| 42 | 1 | Discharge Manifold ASY (includes items 43 & 45-49) | PV236CP | KV236CP | |
| 43 | 1 | Suction Manifold ASY (includes items 42 & 45-49) | PV237CP | KV237CP | |
| 44 | 2 | Discharge Elbow | PV236E | KV236E | |
| 45 | 2 | Suction Elbow | PV237E | KV237E | |
| 46 | 2 | Manifold Tee | PV288 | KV288 | |
| 47 | 4 | Manifold Tee O-Ring (See Note 2) | V288TES, V288XL | | |
| 48 | 8 | Bolt | SV288B | | |
| 49 | 8 | Nut | SV251B | | |
| 50 | 8 | Washer | SV302GA | | |
| Elastomer Material Specifications | | | | | |
| Material | Diaphragm P/N | | Valve Ball P/N | | Seat O-Ring P/N |
| Neoprene | V227N | | V241N | | N/A |
| Nitrile | V227BN | | V241BN | | V258BN |
| FKM | V227VT | | V241VT | | V258VT |
| EPDM | V227ND | | V241ND | | V258ND |
| PTFE | N/A | | V241TF | | V258TES |
| Santoprene | V227TPEXL | | V241TPEXL | | V258XL |
| Hytrel | V227TPEFG | | V241TPEFG | | N/A |

Notes:

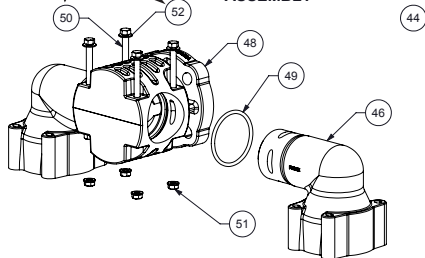
- 1.) The inner diaphragm plate is to match the inner chamber material (Ref. Note 3)
- 2.) TES = PTFE Encapsulated Silicone, XL = Santoprene
- 3.) V = Aluminum, TC = PTFE Coated, NP = Nickel Plated, SV = Stainless Steel



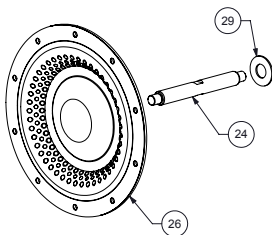
Composite Repair Parts Drawing - PTFE Fitted

**Torque Setting:
180 in-lbs.
(20 N-m)**

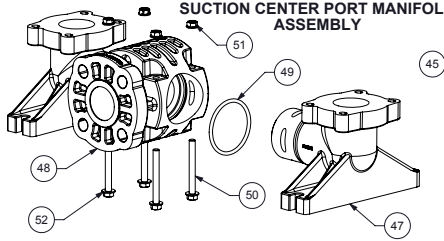
DISCHARGE CENTER PORT MANIFOLD ASSEMBLY



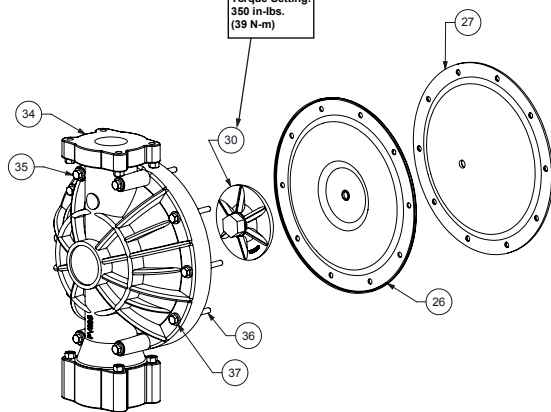
FUSION DIAPHRAGM ASSEMBLY



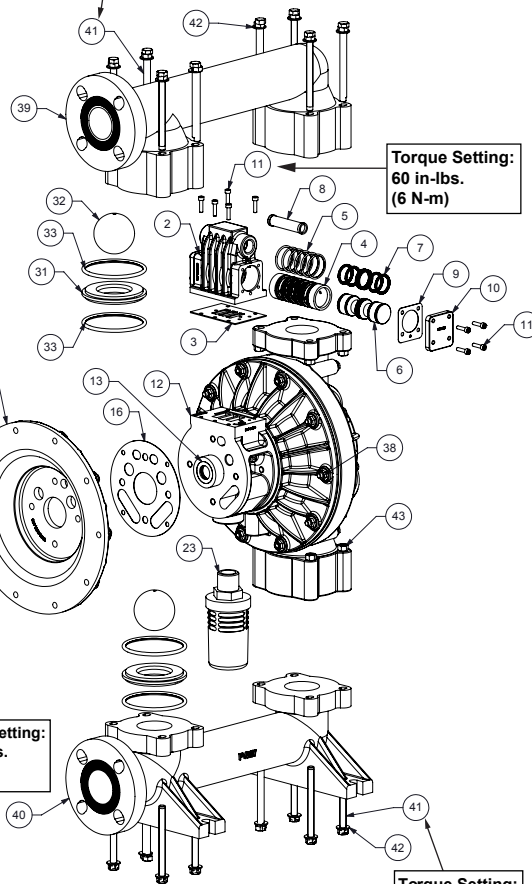
SUCTION CENTER PORT MANIFOLD ASSEMBLY



**Torque Setting:
350 in-lbs.
(39 N-m)**



**Torque Setting:
110 in-lbs.
(12 N-m)**



**Torque Setting:
60 in-lbs.
(6 N-m)**

**Torque Setting:
300 in-lbs.
(33 N-m)**

**Torque Setting:
110 in-lbs.
(12 N-m)**

3: EXP VIEW

Composite Repair Parts List - PTFE Fitted

| Air Valve Assembly | | | | | |
|--|------|--|--|-----------------|---------------|
| Item # | Qty. | Description | Part Number | | |
| | | | Aluminum | Stainless Steel | Nickle Plated |
| | | Air Side Repair Kit (Includes Items 3,5,7,9,14,16,18-22) | | 476.V019.000 | |
| 1 | 1 | Valve Body (includes items 2-11) | 031.V002.156 | 031.V002.114 | 031.V002.332 |
| 2 | 1 | Valve Body | 095.V001.156 | 095.V001.114 | 095.V001.332 |
| 3 | 1 | Valve Body Gasket | | P24-202 | |
| 4 | 1 | Valve Sleeve | | 755.V006.148 | |
| 5 | 6 | O-ring | | 560.206.360 | |
| 6 | 1 | Valve Spool Assembly (Includes items 7) | | 775.V001.000 | |
| 7 | 6 | Glyde Ring Assembly | | P34-204F | |
| 8 | 1 | Air Valve Screen | P24-210 | P34-210 | P24-210 |
| 9 | 2 | End Cap Gasket | | P24-205 | |
| 10 | 2 | End Cap | P34-300 | | SP34-300 |
| 11 | 13 | Mounting Screws (8 included on item 1) | | S1001 | |
| Center Section Assembly | | | | | |
| Item # | Qty. | Description | Part Number | | |
| | | | Aluminum | Stainless Steel | Nickle Plated |
| 12 | 1 | Center Block Assembly (Includes item 13 & 14) | P24-400DC ASY | SP24-400 | P24-401NP |
| 13 | 2 | Bearing Sleeve | | P31-403 | |
| 14 | 2 | Main Shaft O-Ring | | P24-403 | |
| 15 | 2 | Air Chamber | 196.V003.156 | 196.V003.110 | 196.V003.332 |
| 16 | 2 | Air Chamber Gasket | | 360.V001.360 | |
| 17 | 8 | Bolt | P24-110 | | SP24-110 |
| | | Pilot Repair Kit (Includes Items 18-22) | | 476.V018.000 | |
| 18 | 1 | Pilot Sleeve Assembly (include item 19) | | 755.V002.000 | |
| 19 | 6 | O-ring | | 560.101.358 | |
| 20 | 1 | Retaining Ring | | 675.037.080 | |
| 21 | 1 | Pilot Spool Assembly (Includes item 22) | | 775.V002.000 | |
| 22 | 8 | O-ring | | 530.027.000 | |
| 23 | 1 | Muffler | | 530.058.000 | |
| Diaphragm Assembly / Elastomers | | | | | |
| Item # | Qty. | Description | Part Number | | |
| | | | PTFE Two Peice | Fusion | |
| | | | Polypropylene | PVDF | Polypropylene |
| 24 | 1 | Main Shaft | P24-102 | | P24-103F |
| 25 | 2 | Shaft Stud | V221F | | N/A |
| 26 | 2 | Diaphragm | V227TF | | V227F |
| 27 | 2 | Back-Up Diaphragm | V227TFB | | N/A |
| 28 | 2 | Inner Diaphragm Plate | V221TI,V221TINP, V221TITC, SV221TI* (See Note 2) | | N/A |
| 29 | 2* | Bumper Washer | P24-501* (See Note 2) | | |
| 30 | 2 | Outer Diaphragm Plate | PV221TO | KV221TO | N/A |
| 31 | 4 | Valve Seat | PV240 | KV240 | PV240 |
| 32 | 4 | Valve Ball | | V241TF | |
| 33 | 8 | Valve Seat O-Ring | | V258TES | |
| Wet End Assembly | | | | | |
| Item # | Qty. | Description | Part Number | | |
| | | | Polypropylene | PVDF | |
| 34 | 2 | Water Chamber | PV235 | | KV235 |
| 35 | 8 | Large Bolt | | SV250B | |
| 36 | 12 | Small Bolt | | SV250A | |
| 37 | 20 | Washer | | SV250C | |
| 38 | 20 | Nut | | SV185B | |
| 39 | 1 | Discharge Manifold | PV236 | | KV236 |
| 40 | 1 | Suction Manifold | PV237 | | KV237 |
| 41 | 16 | Manifold Bolt | | SV251A | |
| 42 | 16 | Washer | | SV302GA | |
| 43 | 16 | Nut | | SV251B | |
| Optional Center Port Manifold Assembly | | | | | |
| Item # | Qty. | Description | Part Number | | |
| | | | Polypropylene | PVDF | |
| 44 | 1 | Discharge Manifold ASY (includes items 46 & 48-52) | PV236CP | | KV236CP |
| 45 | 1 | Suction Manifold ASY (includes items 47 & 48-52) | PV237CP | | KV237CP |
| 46 | 2 | Discharge Elbow | PV236E | | KV236E |
| 47 | 2 | Suction Elbow | PV237E | | KV237E |
| 48 | 2 | Manifold Tee | PV288 | | KV288 |
| 49 | 4 | Manifold Tee O-Ring | | V288TES, V258XL | |
| 50 | 8 | Bolt | | SV288B | |
| 51 | 8 | Nut | | SV251B | |
| 52 | 8 | Washer | | SV302GA | |

Notes:

- 1.) The inner diaphragm plate is to match the inner chamber material
V = Aluminum, TC = PTFE Coated, NP = Nickel Plated, SV = Stainless Steel
- 2.) On pumps fitted with stainless steel center sections - increase quantity to 4



Material Codes - The Last 3 Digits of Part Number

| | |
|--|--|
| 000.....Assembly, sub-assembly; and some purchased items | 364.....EPDM Rubber Color coded: BLUE |
| 010.....Cast Iron | 365.....Neoprene Rubber Color coded: GREEN |
| 015.....Ductile Iron | 366.....Food Grade Nitrile |
| 020.....Ferritic Malleable Iron | 368.....Food Grade EPDM |
| 080.....Carbon Steel, AISI B-1112 | 371.....Philthane (Tuftane) |
| 110.....Alloy Type 316 Stainless Steel | 374.....Carboxylated Nitrile |
| 111.....Alloy Type 316 Stainless Steel (Electro Polished) | 375.....Fluorinated Nitrile |
| 112.....Alloy C | 378.....High Density Polypropylene |
| 113.....Alloy Type 316 Stainless Steel (Hand Polished) | 379.....Conductive Nitrile |
| 114.....303 Stainless Steel | 408.....Cork and Neoprene |
| 115.....302/304 Stainless Steel | 425.....Compressed Fibre |
| 117.....440-C Stainless Steel (Martensitic) | 426.....Blue Gard |
| 120.....416 Stainless Steel (Wrought Martensitic) | 440.....Vegetable Fibre |
| 148.....Hardcoat Anodized Aluminum | 500.....Delrin® 500 |
| 150.....6061-T6 Aluminum | 502.....Conductive Acetal, ESD-800 |
| 152.....2024-T4 Aluminum (2023-T351) | 503.....Conductive Acetal, Glass-Filled |
| 155.....356-T6 Aluminum | 506.....Delrin® 150 |
| 156.....356-T6 Aluminum | 520.....Injection Molded PVDF Natural color |
| 157.....Die Cast Aluminum Alloy #380 | 540.....Nylon |
| 158.....Aluminum Alloy SR-319 | 542.....Nylon |
| 162.....Brass, Yellow, Screw Machine Stock | 544.....Nylon Injection Molded |
| 165.....Cast Bronze, 85-5-5-5 | 550.....Polyethylene |
| 166.....Bronze, SAE 660 | 551.....Glass Filled Polypropylene |
| 170.....Bronze, Bearing Type, Oil Impregnated | 552.....Unfilled Polypropylene |
| 180.....Copper Alloy | 555.....Polyvinyl Chloride |
| 305.....Carbon Steel, Black Epoxy Coated | 556.....Black Vinyl |
| 306.....Carbon Steel, Black PTFE Coated | 558.....Conductive HDPE |
| 307.....Aluminum, Black Epoxy Coated | 570.....Rulon II® |
| 308.....Stainless Steel, Black PTFE Coated | 580.....Ryton® |
| 309.....Aluminum, Black PTFE Coated | 600.....PTFE (virgin material) Tetrafluorocarbon (TFE) |
| 313.....Aluminum, White Epoxy Coated | 603.....Blue Gylon® |
| 330.....Zinc Plated Steel | 604.....PTFE |
| 332.....Aluminum, Electroless Nickel Plated | 606.....PTFE |
| 333.....Carbon Steel, Electroless Nickel Plated | 607.....Envelon |
| 335.....Galvanized Steel | 608.....Conductive PTFE |
| 337.....Silver Plated Steel | 610.....PTFE Encapsulated Silicon |
| 351.....Food Grade Santoprene® | 611.....PTFE Encapsulated FKM |
| 353.....Geolast; Color: Black | 632.....Neoprene/Hytrel® |
| 354.....Injection Molded #203-40 Santoprene® Duro 40D +/-5; Color: RED | 633.....FKM/PTFE |
| 356.....Hytrel® | 634.....EPDM/PTFE |
| 357.....Injection Molded Polyurethane | 635.....Neoprene/PTFE |
| 358.....Urethane Rubber (Some Applications) (Compression Mold) | 637.....PTFE, FKM/PTFE |
| 359.....Urethane Rubber | 638.....PTFE, Hytrel®/PTFE |
| 360.....Nitrile Rubber Color coded: RED | 639.....Nitrile/TFE |
| 363.....FKM (Fluorocarbon) Color coded: YELLOW | 643.....Santoprene®/EPDM |
| | 644.....Santoprene®/PTFE |
| | 656.....Santoprene® Diaphragm and Check Balls/EPDM Seats |
| | 661.....EPDM/Santoprene® |
| | 666.....FDA Nitrile Diaphragm, PTFE Overlay, Balls, and Seals |
| | 668.....PTFE, FDA Santoprene®/PTFE |

- Delrin and Hytrel are registered trademarks of E.I. DuPont.
- Nylatron is a registered trademark of Polymer Corp.
- Gylon is a registered trademark of Garlock, Inc.
- Santoprene is a registered trademark of Exxon Mobil Corp.
- Rulon II is a registered trademark of Dixon Industries Corp.
- Ryton is a registered trademark of Phillips Chemical Co.
- Valox is a registered trademark of General Electric Co.

RECYCLING

Warren Rupp, manufacturer of Versamatic, is an ISO14001 registered company and is committed to minimizing the impact our products have on the environment. Many components of Versamatic® AODD pumps are made of recyclable materials. We encourage pump users to recycle worn out parts and pumps whenever possible, after any hazardous pumped fluids are thoroughly flushed. Pump users that recycle will gain the satisfaction to know that their discarded part(s) or pump will not end up in a landfill. The recyclability of Versamatic products is a vital part of Warren Rupp's commitment to environmental stewardship.

5 - YEAR Limited Product Warranty

Quality System ISO9001 Certified • Environmental Management Systems ISO14001 Certified

Versamatic warrants to the original end-use purchaser that no product sold by Versamatic that bears a Versamatic brand shall fail under normal use and service due to a defect in material or workmanship within five years from the date of shipment from Versamatic's factory.

The use of non-OEM replacement parts will void (or negate) agency certifications, including CE, ATEX, CSA, 3A and EC1935 compliance (Food Contact Materials). Warren Rupp, Inc. cannot ensure nor warrant non-OEM parts to meet the stringent requirements of the certifying agencies.

~ See complete warranty at http://vm.salesmrc.com/pdfs/VM_Product_Warranty.pdf



EC Declaration of Conformity

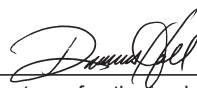
Manufacturer:
Warren Rupp, Inc.
800 N. Main Street
Mansfield, Ohio, 44902 USA

Certifies that Air-Operated Double Diaphragm Pump Models: E Series, VL Series, VM Series, U2 Series; Submersible Pump Models: VSMA3 Series, SPA15 Series and Surge Dampener/Suppressor Models: VDA Series, VTA Series comply with the European Community Directive 2006/42/EC on Machinery, according to Annex VIII. This product has used Harmonized Standard EN809:2012, Pumps and Pump Units for Liquids - Common Safety Requirements, to verify conformance.

October 3, 2022

DATE/APPROVAL/TITLE:

Technical File on record with:
DEKRA Certification B.V.
Meander 1051
6825 MJ Arnhem
The Netherlands


Signature of authorized person

Dennis Hall
Printed name of authorized person

Engineering Manager
Title





EC Declaration of Conformity

Manufacturer:
Warren Rupp, Inc.
800 N. Main Street
Mansfield, Ohio, 44902 USA

Certifies that Air-Operated Double Diaphragm Pump Models: E Series, VL Series, VM Series, U2 Series; Submersible Pump Models: VSMA3 Series, SPA15 Series and Surge Dampener/Suppressor Models: VDA Series, VTA Series comply with the United Kingdom Statutory Instruments 2008 No. 1597, The Supply of Machinery (Safety) Regulations 2008, according to Annex VIII. This product has used Designated Standard EN809:2012, Pumps and Pump Units for Liquids - Common Safety Requirements, to verify conformance.

October 17, 2022

DATE/APPROVAL/TITLE:

Technical File on record with:
DEKRA Certification UK Limited
Stokenchurch House
Oxford Road
Stokenchurch
HP14 3SX

Signature of authorized person

Dennis Hall

Printed name of authorized person

Engineering Manager

Title

